

This is a header page for the
November 2025

Edition of
The Kentish Voice

It will enable you to view the
edition as you would read it
in hardcopy

When you open the PDF
select View
then 2 pages at a time.



A Community Newspaper produced by Thema Pty Ltd
www.thekentishvoice.com.au

Serving over
6000 residents in
Kentish
**DISTRIBUTED
FREE**

ISSN 2202-2813
Established 2013
Issued Monthly
Vol. 13 No.05
NOVEMBER 2025

Amy is a legend with leftovers



Story Page 3

Roberts | **Nicholson**
real estate

Buyers Falling Fast for Your Kentish Property

Explore your options with Corinne!

Corinne Nicholson - Principal
corinnenicholson@robertsre.com.au

48 Main Street, Sheffield, TAS 7306
(03) 6491 1499

0488 611 968



THE KENTISH VOICE

Circulated FREE in the Kentish Municipality
and FREE download from the website
www.thekentishvoice.com.au

The Kentish Voice, 12 Victoria Street
Sheffield TAS 7306
Published by Thema Pty Ltd
as trustee of the Douglas George Begg Family Trust
ABN 53 646 737 964

Editor : *Heather Eiszele*
Phone: 0407 546 486
Assistant Editor : *Lesley Begg*

Contact for Editorial:
editor@thekentishvoice.com.au

Contact for Advertising: *Lesley Begg*
advertising@thekentishvoice.com.au
Phone: 0408 451 107
Website: www.thekentishvoice.com.au

Printed by
Document Management Tasmania

**Deadline for advertising and articles is
18th of the month for the next edition.**

Disclaimer: While every care is taken, the publishers of *The Kentish Voice* cannot be held liable for any publication errors in written material or advertisements. Views expressed by contributors are not necessarily those of the Editor or Staff. The Editor reserves the right to exclude any contributor or advertiser at their discretion. Some material may be abbreviated due to space availability. ©Copyright Thema Pty Ltd 2025 All rights Reserved

EDITORIAL

This month's bumper issue of 48 pages is testament to the vibrancy and energy of Kentish. From markets to museums, from arts to sports, this area is brimming with opportunities and activities.

And pretty much everything is run by volunteers: land care, men's shed, U3A, Probus, SteamFest, The Hub, Scouts, sports, garden club, singing groups, neighbourhood centres, breakfast clubs at primary schools and the Christmas parade.

The vibe that is Kentish is due to the willingness and commitment of so many to make it the best place possible. To make it full of possibilities.

This year marks the 40th anniversary of murals in Sheffield, an initiative of the late Brian Inder, the Laird of Lower Crackpot, who realised the town needed a drawcard, something iconic to make it worth a detour off the highway.

In an age before email, mobile phones and internet, Brian's energy and enthusiasm convinced others to follow his lead and many murals later, the town hosts an international mural painting competition, showcased this month. Also run by volunteers.

Dare to dream, huh?

Alan Dyer's columns in *The Kentish Voice* always spark a

Page 2

HOW TO GET YOUR COPIES OF THE KENTISH VOICE

2700 copies DISTRIBUTED to Pick-up
points in Sheffield, Railton & Wilmot areas
as well as outlying communities.

Or you can read a copy at:

- o Mountain Mummas o Bossimis Bakery
- o Tasmanian Farm Shop o Epicurean Cafe
- o Sheffield Library o Moo Choo Take Away

You can DOWNLOAD A COPY of
The Kentish Voice

from our Website:

www.thekentishvoice.com.au

OR Subscribe to have a link
delivered to your Inbox free

OR by Post (P&H costs)

OR find a list of Pick-up Points



sense of awe as the achievements of the early settlers were truly incredible. That strength, that determination to create something out of nothing and to make a home among like-minded neighbours is the backbone of Kentish.

Our grandparents and great-grandparents and generations before laid the foundations for the type of community we have so gratefully inherited.

The urge to improve things, to make things better for the whole community and not just an individual pursuit of wealth or glory, seems to be universal. Even organisations which have had the same people at the helm for a while are committed to continuous improvement.

New residents will bring new ideas and that can be a challenge but the changing of the guard is inevitable. It is essential that we embrace the next generation of volunteers as without them, all the time and effort that has gone into making our clubs and organisations so successful will be lost.

Kim Johnson has announced that she will be stepping down as coordinator of the Claude Road Market at the end of 2026 so the next Kitchen Queen or King has a year to learn her curry scallop pie recipe!

The legacies of our forebears need to be respected.

And the innovation of the dreamers
needs to be emulated.

Heather

The Kentish Voice - November 2025

Everyday cook's crowning achievement

By Heather Eiszele

For Amy Edwards, opening the fridge door is an opportunity for creative cooking.

The Sheffield home school mum of two loves to put together imaginative dishes based on what's left over; pineapple from last night's pizza, cheeses from a platter...

Her resourcefulness and flair recently saw her crowned national Leftover Legend at the Saveful awards part-sponsored by celebrity chef Matt Moran.

She flew to Sydney with three other finalists where she had an hour to prepare three dishes, taste tested by Masterchef judge Michael Weldon among others.

"I've never been more shocked in my life," said Amy, recalling when she was announced winner. "Two of the other finalists had been on Masterchef!"

From leftovers including roasted vegetables, rice, a chicken and "random ingredients", Amy created Cajun chicken vol-au-vents with bacon, a cold chicken salad, a deep-fried tuna chickpea tortilla with Mexican cream and coriander as well as her crowing achievement, Scotch eggs made from sausage and sweet potato mash.

"I got the yolk just right," said Amy. "It was perfectly runny."

Dishes were tested based on creativity, presentation and "straight up deliciousness" with the three cooking challenges themed Fridge Foray, Pantry Pickings and Freezer Finds.

Saveful, an app which provides recipes for leftovers, is committed to ending food waste. According to its website, the average Australian wastes around 98kg of food every year,



Winner, winner, chicken dinner! Amy Edwards is congratulated by Judge Matt Moran.

despite 70 per cent of binned food being perfectly edible.

Apart from a night at award-winning restaurant Aria at the Opera House, Amy won \$15,000 worth of groceries, \$1000 in Harvey Norman vouchers and a \$5000 Qantas credit.

"The pressure was on but it was fun in hindsight," she said. "It's amazing that everyday cooks have a chance to be recognised for something often seen as mundane, done day-in and day-out. Your family are always biased to your cooking, but to receive wonderful feedback from prestigious cooks is next level reassuring. I just enjoy cooking so much."

Celebration of 40 years of Mazes & Murals at Tasmazia

Saturday 15th November



"Stillness and Warmth" by John Lendis



Local community groups will contribute to the celebration of 40 years of Mazes & Murals at Tasmazia on Saturday 15th November.

Music, sausage sizzle, children's games, and face painting; viewing of the legacy of the Laird (& Lady) of Lower Crackpot; all part of the celebration with Leonie Hiscutt honouring her long association with the Kentish community.

Come celebrate with the community 40 years of Mazes and Murals.

All welcome.

Open 10am - 4pm every day
Last entry to the Mazes 3pm



Phone : 6491 1934
enquiries@tasmazia.com.au
500 Staverton Rd, Promised Land

Finally, a place to air dirty laundry

By Heather Eiszele

For some time, it seemed like Neale and Annette Gillett were stuck in a spin cycle.

The couple spent more than two years and \$170,000 to establish the Soft n Fluffy laundrette at the front of True Blue holiday units in Main Street and were relieved when everything came out in the wash.

The six-washing machine and six-dryer facility was officially opened early last month, complete with sausage sizzle and Batman on his kazoo.

Neale said the 1910s building had once housed a pole-dancing studio, a photography business and the mosaic-inspired marble shop but he and Annette were looking for a longer-term tenant.

Guests at the apartments were forced to travel to Devonport to get their washing done and repeated requests for the service led to the beginning of a series of hot and cold cycles through the approvals process.

The laundromat, which includes a section for pet bedding and can handle horse rugs, was ready to open in July but the plumbing wasn't approved by Kentish Council.

"There's just no common sense," Neale said. "The council's role should be to help people in daily life, businesses especially. They should help create what's good for the town and assist and support the residents."

"But I think all councils have lost that connection with the public."

Neale cited numerous examples of red tape holding up the



opening of the laundromat, while having to jump through "unnecessary hoops".

"Thank you to the many people who stopped by while we were working on this project and wished us luck," he said.

"And for the history lesson on the building."

The Soft n Fluffy laundrette and Furry Friends laundrette is at 34 Main Street, open seven days from 9am to 6pm.

Large high-quality commercial washers and dryers of 15kg and 25kg are available. "Big machines mean a cheaper price per kilo of washing and drying," Neale said.

Pitch in for carol singing

Community Christmas Carols

Sheffield Town Hall, Sunday, December 14, 7pm

With Christmas approaching, a small group at the Sheffield Uniting Church has taken on the responsibility of organising the Community Christmas Carols night.

We want as many families to be come along as possible, to help celebrate Christmas as a community. We intend to have many of the usual features... many favourite Christmas Carols and songs We are hoping everyone has been really good this year, so that the Jolly Old Chap will call in to see us.

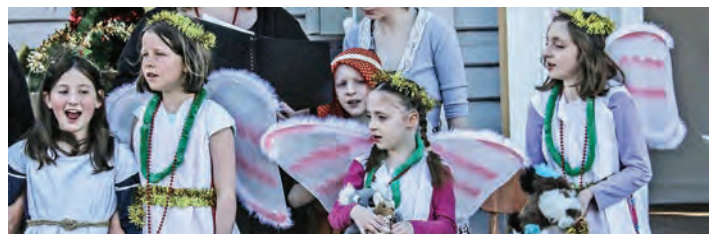
As well as enjoying the talent of those in our community, there will be plenty of chances for everyone to join in the singing, thanks to Sean Churchward and other helpers.

Words to carols and songs will be projected on to the large screen with booklets available at the door. For safety reasons, there will be some battery-operated candles available, but everyone is encouraged to bring their own.

After the program, something a bit different... a light supper so people can chat and get to know others in the community.

Finally, are you going to be on your own on Christmas Day? We want to know. There will be a folder on the table near the entry to write your name so we can be in touch.

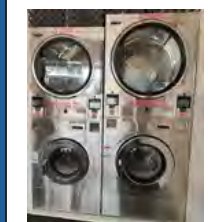
For more information, contact Leoni Read 0429 705 062.



New Laundrette in Sheffield NOW OPEN



**For People
15 kg and 25kg
Washers & Dryers
For Pets
Washers & Dryers
for bedding etc.**



**Thanks to all who
have provided
support and
encouragement
along the way.**

**7 Days
9am - 6pm**

Happy to explain how to use machines, and talk about supporting local business needs.

34 Main Street Sheffield

Railton welcomes the neighbours

New residents to Kentish are invited to attend an Open Day at the Railton Neighbourhood Centre where Mayor Kate Haberle will welcome them to the municipality.

“I realised there’s quite a few new families in Kentish that I haven’t even met and I thought this would be a good opportunity to catch up in a friendly environment and get to know each other,” said Mayor Kate. “And, of course, reconnect with familiar faces.”

The Open Day will be held on Thursday, November 27, from 10am-1pm at the centre, 8 Foster Street, Railton.

Visitors will be able to browse the shop and explore the community garden while enjoying tea, coffee and a light lunch. Craft demonstrations and interactive art projects are also planned.

The Neighbourhood Centre is expanding its reach in the community and inviting craftspeople to sell their creations in the shop, for a donation.

Chairperson Dot McNab said the aim was to get more people involved with the Neighbourhood Centre to ensure its engagement with the community.

“A lot of people don’t even realise what’s available here,” she said. “We welcome anyone with an idea, anyone who needs support and anyone who would like to use our kitchen and meeting space.”

Dot said the centre needed more volunteers as only four people were covering three shifts, from 10am to 3pm, each week.

“The centre is a visitor information centre so it’s important that we have the right people to give them suggestions and point them in the right direction. That sort of first impression makes people come back – and they tell their friends.”

Dot said a recent Spring Clean at the centre had freshened up



Meet the neighbours: (from left) Christine Russell, with RNC co-chairs Dot McNab and Trudy Wells.

the display shelves and she invited the community to do some early Christmas shopping.

The Open Day is an opportunity for people to discover what’s on offer at the centre, which hosts craft days, sells locally made gifts and produce and has a large community garden for anyone to enjoy. Centrelink approved for volunteers.

Hey Gang!
ONLY ONE TO GO
'TIL GOODBYE TRIVIA 2025!!
Monday November 17th
Tis OUR XMAS ONE
Usual Time, Usual Place
Dress yourselves,
Dress your 'space';
Test each other
And enjoy the chase!
Thankyou once more
for your great support in 2025.
You're the best!
Let's do it again
in 2026.
Watch this space.

medicare
**Mental Health Centre
Devonport**
The Devonport Medicare Mental Health Centre offers a safe and supportive environment where adults aged 18 and over can access free, professional mental health support, with no need for a referral or appointment.
When you come to the Devonport Medicare Mental Health Centre, you'll be welcomed into a calm and friendly space. There's no pressure, we'll take things at your pace.
You'll have a relaxed chat with one of our team members to get to know you and understand what's been going on. From there, we'll work with you to find the kind of support that feels right, whether that's counselling, peer support, or something else. Everything you share is confidential, and you are welcome to bring a friend, family member, or support person if that makes you feel more comfortable.

OPENING HOURS 10 AM - 6 PM MONDAY - FRIDAY	LOCATION 11 - 17 STEWART STREET DEVONPORT TAS 7310
E-MAIL DEVONPORT.MMHHC@STRIDE.COM.AU	PHONE NUMBER 1800 595 212

Discover mural art at open air gallery

Have you ever stopped to think just how special and unique International Mural Fest is, not just to Sheffield, Tasmania, but to all of Australia?

Each year, from a wide pool of entries, nine talented artists are selected by an esteemed panel to travel to The Town of Murals. Their mission: to create a vibrant, thought-provoking mural based on this year's theme, *Amazing Discoveries*. During the week, Sheffield's Mural Park transforms into an open-air gallery filled with colour, creativity and community spirit.

Set against the spectacular backdrop of Mt Roland and surrounded by two decades of winning murals, this year's event promises to be unforgettable. We are proud to welcome our 2025 muralists:

Marion Robertson assisted by Roslyn Faulkner (Tas), Gren Freeman (Tas), Kristina Greenwood (NSW), Marc Spijkerbosch assisted by Tracey Lee Spijkerbosch (NZ), Christina Rankin (Vic), Kerry Nicholson assisted by Dolly Nicholson (QLD), Marco Pennacchia (Vic), Rebecca Hayes (Tas) and Steve Monk assisted by Carole Monk (Vic).

International Mural Fest is free and open to the public from Sunday, November 2. Visit Mural Park to meet the artists, vote for your favourite mural and even try your hand at painting on our public mural.



What a hoot! Wheels up for Sandy Brattstrom and Batman.

Then, join us for the grand finale on Saturday, November 8. From noon to 2pm, enjoy live entertainment by Rosie Haden's *Under the Radar*, followed by the eagerly anticipated Mural Miniature Auction and Awards Presentation at 2pm.

Sheffield Community Singers spread the joy

By Rosie Haden

In the winter of 2024, I put up a post on a local Facebook page asking for "expressions of interest" in forming a singing group. I was quite overwhelmed by the response, expecting only a few, so my issue then became finding a suitable space for us all to get together and sing. Fortunately, one of the responders was Leoni Read who kindly offered the Uniting Church hall – gold coin donation all that was required. Thus the Sheffield Community Singers was born.

In the past year we have built up a pretty good repertoire and honed our skills in phrasing and harmony. We play regularly at Tandara Aged Care and have performed at Devonport Jazz Festival (gospel event) as well as Mt Roland Folk Festival.

The idea of having a vocal workshop came about after hearing the trio *Sparrowgrass* perform at this year's Devonport Jazz Festival. I asked if they would be interested in coming along to one of our get togethers and teach us the song *The Power of Kindness* (by *MaMuse*) in three-part harmony.



The Hub's Sandra Howe presents the cheque to Sparrowgrass (Tessa Lee, Sophie Leslie, Alex Morse) with organiser Rosie Haden

A positive affirmation and a kind donation from The Hub meant September 25 could go ahead.

This event was public and it was great to see other members of the community coming along to participate.

Sandra Howe from the Hub was there as well to present the cheque to *Sparrowgrass* - Alex Morse, Sophie Leslie and Tessa Lee.

We all had a most fantastic time - such a wonderful joyful vibe and great fun. We will be performing *The Power of Kindness* at next month's Mt Roland Folk Festival - November 14-16.

Grateful thanks from us all at Sheffield Community Singers to Sandra Howe and The Hub plus Leoni Read for making this all possible.

Thank you so much *Sparrowgrass* for spreading the joy.

What's On – International Mural Fest Week

SATURDAY 1 & SUNDAY 2 NOVEMBER
SATURDAY 8 & SUNDAY 9 NOVEMBER

11am-4pm | 14 Spring St, Sheffield

Explore the wonderful world of yesteryear at Sheffield Steam & Heritage Centre. Steam trains will be running from the original Sheffield Railway Station. There are also miniature train rides and a model railway display at various times.

Adults \$10
 Family \$20
 Children / Concession \$8
 Under 5 and over 90 Years Free

SUNDAY 2 NOVEMBER

9am – 'Paint Off' | Mural Park

Cheer on the Artists as they race to start their murals!

SATURDAY 8 NOVEMBER

12 Noon – 'Brushes Down' | Mural Park

Countdown to 12 Noon as the Artists put the finishing touches on their murals.

12 Noon-2pm – Entertainment

Rosie Haden's 'Under The Radar'.

2pm – International Mural Fest Awards Presentation | Mural Park

Mural Miniature Auction conducted by Gerald Davies, Roberts Real Estate Devonport.

Announcement of the Judges' Award **Inner Prize** sponsored by Kentish Council, the Slaters Country Store **People's Choice Award** and the eGuide Volunteers' Choice Award.

SATURDAY 8 NOVEMBER: 10AM-5PM
SUNDAY 9 NOVEMBER: 10AM-4PM

Tasmanian Medieval Festival – Featuring Knight Fight | 14 Spring St, Sheffield

Witness the clash of steel as knights battle in full medieval armour at 11am and 2pm each day!

Step back in time with historic reenactments, fantasy cosplay, LARP archers, and thrilling sword fights.

Explore the medieval craft market and join in the fun of the costume parade at 1pm daily.

You may even ride the iron beast with the dragon's breath that some call a "train".

A weekend of history, fantasy, and adventure awaits! **Just \$5 per person, Children under 13 Free.**

Weeklong Events

'FAMOUS ARTISTS REIMAGINED' EXHIBITION

Daily: 10am-4pm | Sheffield Arts Gallery

Visit the Sheffield Art Gallery showcasing some of the Kentish region's finest artisans displaying a wide variety of arts and crafts. Perfect for some early Christmas shopping.

PUBLIC MURAL PAINTING
LET YOUR CREATIVITY SHINE

Daily: 9am-4pm | Sheffield Arts Centre

Make your mark on International Mural Fest 2025.

Cost..... Gold Coin Donation



Remember to vote for the **People's Choice Award!**



See you at Mural Fest
Thursday 6th November
for the best curries!



2025

Vote for **People's Choice Award**

Entertainment by **Rosie Haden's 'Under The Radar'**

Saturday 8th November
 Mural Park
 12 Noon-2pm

Delivered in partnership with Kentish Council.



THEME

Amazing Discoveries



2-8 November | Free Entry | Sheffield, Tas



Awards Presentation & Auction of Mural Miniatures

Saturday 8 November
 2pm at Mural Park
 5 Pioneer Crescent, Sheffield



FOLLOW US ON



Photo: Devonport

Private gardens open for visitors to admire



During the weekend of November 29-30, 2024, eight private gardens will be open to visitors. The gardens are can be found in Sheffield, Claude Road, Barrington, Nook and Acacia Hills.

The event is organised by Kentish Garden Club to celebrate spring and the joys and benefits of gardening.

Now in its sixth year, this year's line-up includes three gardens not opened before as well as

favourites, including Jane and Peter Westren's garden at Nook.

Good rains this year and mild conditions mean spectacular displays of flowers, including roses, flowering trees such as dogwoods and perennials including daylilies, delphiniums and daisies. Productive gardens are well advanced.

"Visiting other people's gardens inspires your own gardening and provides plenty of ideas to take home," said Jennifer Stackhouse, President of the Kentish Garden Club, who will be helping sell tickets over the open weekend.

"We have a mix of gardens from two compact town gardens to large rambling country gardens with great views.

"Several gardens have stalls with plants, including daylilies, rare perennials, shrubs and natives as well as garden ornaments and jewellery."

The gardens are open between 10am and 4pm during the weekend of November 29-30. Tickets cost \$10 (children free), which covers entry to all gardens all weekend.

The gardens can be visited in any order. Tickets and a garden map are available at the courtyard of the Epicurean Café, 72 Main Street, Sheffield from 9.30am and all weekend.

"By selling tickets at a central location in Sheffield, garden visitors are encouraged to visit local businesses and admire the town's murals, including the new murals created during MuralFEST 2025 on show in Mural Park," said Jennifer. The event also brings visitors to the region from across the state.

For more information on the event or Kentish Garden Club, please call Jennifer on 0488 047 011.

Hey there, creatives!

Entries are now open for the 2026 Weindorfer Short Film Festival. Make a short film about some aspect of nature, the environment and its protection, its beauty, its amazingness, its wilderness, or how someone can make a positive difference in the world, like Gustav and Kate Weindorfer did at Cradle Mountain in the early 1900s.

Without Kate and Gustav we would not have had our beautiful Cradle Mountain National Park protected for us to enjoy.

Enter your short film through the Freeway portal found on the website: www.weindorferfilmfestival.com.au. Big cash prizes and the prestigious Weindorfer Award to be won!

You could attend a free workshop on how to edit your short film by professional film makers, Holly and Riley Sapsford at:

- The Green Room, High Street Sheffield, Wednesday, November 26, 3-5:30pm
- RANT Stewart Street Devonport, Saturday, November 22, 9:30-12 noon;
- The Hive, Ulverstone, Saturday, November 29, 9:45am-12:30pm;
- Wilmot Memorial Hall Saturday, November 29, 3-5:30pm;
- The Montgomery Room, Ulverstone, Sunday, November 30, 1:30-4pm.

These workshops, "Future Filmmakers Lab", have been generously funded by the Department of State Growth through the Community Support Fund. You are welcome to attend. Just notify Sandra on 0448 976 442 or Idell on 0448 326 246.

- Sandra Rowden-Rich

 Kentish House 18 Station St, Sheffield Mon-Thu 9am-4pm & Fri 9am-2pm Ph. 6491 2322 / 0447 325 343 kentishhouse@glenhaven.org.au facebook.com/kentishhousetas instagram.com/kentish.house
JUSTICE OF THE PEACE JP will be at Kentish House fortnightly. No appointment needed. Fortnightly (Monday) 9:30-11:00am
SERVICES AUSTRALIA (CENTRELINK) Visiting Sheffield (9:30-11 am) and Railton (12-12:30pm) TUESDAY 12th November Contact Kentish House to book specific appointment times alternatively, walk-ins are welcome.
MR PERFECT BBQ A FREE blokes BBQ Saturday 29th November 2025 11:00am - 12:30pm Health Park Sheffield * In case of bad weather join us at Bossimis for a hot drink and chat.
KENTISH HOUSE PLAYGROUP Enjoy play time and activities with your child/ren 0-5 years. Tuesdays 9:00-11:00am during school terms
FOOD PICK UP & BREAD PICK UP AT KENTISH HOUSE Food & Bread Pick-up: Wednesday's 9:30 - 11am Amounts available vary, items available are on a first in-basis.

Familiar faces help the medicine go down

By Heather Eiszle

Turnbulls Pharmacy in Sheffield will offer better health services and cheaper prices following the change of ownership and appointment of a Pharmacist in Charge.

Sonam Nandgerikar, whose first job was at Turnbulls as a pharmacist's assistant in 2020, settled on the business last month and convinced Turnbulls veteran Michael Meaney to return.

Michael worked with the original owner, Ken Turnbull, later becoming partners and then running the business himself for 10 years.

It is now run by the Tasmanian-based Helix Pharmacy Group, replacing Pharmacy Alliance.

Michael will dispense on Mondays and Saturdays but is working full-time until the new management settles in. "I've taken annual leave from my job as a clinical pharmacist at the (Mersey) hospital so I can work full-time here for now," he said.

Sonam, who is getting married in India on November 22, said the biggest change would be better pricing.



Local: pharmacists Michael Meaney and Sonam Nandgerikar return to Sheffield.

"We did notice that the pricing the previous owners had was very high," she said. "The community did support us and we want to give back to the community and bring down the pricing by a lot, on all things."

Sonam said Turnbulls would offer better health services with a pharmacist in charge, including vaccinations, first aid services and a greater range of products, particularly vitamins.

"We will have flu vaccines, Covid, Shingles, RSV and later we hope to introduce vaccines for travel," she said.

"We will have a bigger range of health care products and definitely increase our first aid range."

"It will all help ease the load on the doctor's surgery."

Turnbulls Retail Manager Sunshine Barker said the changes would mean more opportunities to serve the community.

"It will make a huge difference as people won't have to travel for vaccinations and we'll have reduced script prices," she said.

"It's been hard without a full-time pharmacist."

Celebrate Wilmot Museum



The Wilmot Tourist & Progress Association Inc invite you to join us on Saturday, November 15, to celebrate the 20-year anniversary of our wonderful Museum which showcases the history of the Wilmot Area since European settlement.

This activity is supported by Arts Tasmania.

The official unveiling of a commemorative plaque will be held at 11am, followed by time to explore the Museum.

Come chat with our volunteers, learn about the area's history and check out the family history resources we have.

This will be followed by light refreshments at the Wilmot Hall at approximately 12.30pm and the cutting of the birthday cake.

For catering purposes, it would be wonderful if you could let us know you are attending either through our Facebook page Wilmot Historic Museum, popping into the Museum or leaving a message on 6492 1121.

- Jean MacDonald, Secretary



Social Hub

A Safe Space for Neurodiverse Young People
Ages 12-18

SENSORY ACTIVITIES GAMES
LEGO CRAFT OPTIONS

Every Second Monday 3-4:30 pm
27th October
10th November
24th November
8th December

Parents/Guardian must attend with young person/s

For more information, contact Kentish House
0447 325 343

Folk Festival features fresh faces

The seventh Mount Roland Folk Festival - a weekend celebration of music, dance, poetry, learning and community spirit - is on in Sheffield from November 14-16.

This year marks our third year in Sheffield, following on from the first four which took place at Gowrie Park. The festival will run from Friday evening until Sunday late afternoon. The main venues are the Sheffield Town Hall, The Sheffield Uniting Church and The Drill Hall.

The festival program is jam packed full of quality performance and learning opportunities. We will present over 90 musicians and performers showcasing multiple music genres, dance, poetry, workshops, choirs, yoga and master classes featuring local, interstate and international artists.

Our Sheffield community will shine, with local community groups and musicians in the spotlight.

Highlights include Jenny Mitchell, winner of NZ Best Country Artist and two-time Golden Guitar nominee. Jenny (*pictured*) is a Melbourne-based storyteller from New Zealand, with powerful songs wrapped in equal parts grace and grit. Jenny recently supported Kasey Chambers on a 32-date national tour and released her highly acclaimed album, *Forest House*.

There is so much more on offer – hear songs from the labour and social justice movements from US troubadour and activist George Mann (US). John Coleman and the *Lovely Boats* will perform John's master crafted Tasmanian story songs with rich vocal harmonies and exquisite playing from the talented *Lovely Boats*. The list goes on and includes a feast of local talent such as the Latrobe Federal Band and the Sheffield Community

Singers among many more.

The Saturday evening concert will feature *Homebru*, a contemporary folk outfit consisting of three brothers from Hobart who have been playing together from a young age. They are known for their vibrant, rollicking yet refined sound.

Rhys Crimmin joins the festival line-up again this year, his music draws from a range of genres from folk to country, blues and reggae. Rhys is multi-instrumentalist one-man band, singer-song writer and teller of Australian stories. This concert will have you up on the dance floor and singing along to some old favourites with the Folk Anthem Pub Choir. You will know all the words, and if you don't, we'll give them to you on a sheet of paper. It'll be huge, it'll be spine-tingling, wailing your head off with a hall full of people doing the same thing.

See www.mountrolandfolkfest.org.

The festival is a not for profit event and our organising committee work on a voluntary basis. What a team. Let us know if you want to help. We are looking for people willing to accommodate some interstate performers. You will receive a free double weekend pass if you can provide a bed or two.

We are thrilled to present The Mount Roland Folk Festival in Sheffield, and we know that our community will benefit from the energy and diversity which the festival generates.

We hope you will join us.

- Mount Roland Folk Festival committee



2025 Honey and Hive Festival

Presented by the **North West Branch** Tasmanian Beekeepers Assn

10am -- 3.00pm **SATURDAY 8th Nov 2025**

Heybridge Recreation Ground

(Cuprona Football Club Ground)

Southern End of River Ave., Heybridge

General Market, food and coffee. Bar facilities available from 11am

Learn about Bees, with talks, Equipment displays, Glass fronted hives,

Hive enclosure to allow everyone to see what's in a hive of live bees,

honey tasting and sales, Honey competitions, Photo competitions

.....and much more!

Also.....Live hive inspections for those with beekeeping PPE.

Come along and enjoy the day

Come dressed as a bee.....and win a prize!

Entrance Fees:

Adults \$5 Children Free

Members & Concession card holders \$3

For more information: Email northwest_tba@live.com.au
Facebook [North West Tasmanian Beekeeping](https://www.facebook.com/NorthWestTasmanianBeekeeping)



VISIT *Slaters*

- SEE THE LATEST FASHION IN LADIESWEAR, MENSWEAR AND FOOTWEAR
- VIEW THE FLYING FOX CHANGE DISPENSER
- ENJOY THE SERVICE OF OUR FRIENDLY STAFF
- SEE THE MURAL AND LEARN THE STORY OF THE MISSED OPPORTUNITY
- OPEN 7 DAYS A WEEK

P: (03) 64911121

52 Main Street, Sheffield
www.slaterscountrystore.com.au
E: admin@slaterscountrystore.com.au

**Paradise Road
Massage & Sauna**

**Rumiko Young
Remedial massage therapist**

**Myofascial cupping • Dry
needling • Health Fund rebates**

0487 602 513

Mt Roland Folk Festival

Sheffield Nov 14-16 2025

Jenny Mitchell (NZ) - John Coleman and The Lovely Boats
The Heart Collectors - HomeBru - George Mann (US)
Rhys Crimmin - The Young Irishlanders - Fritch
The Weeping Willows - Alex Morse - As The Crow Flies
Daniel Townsend & Band - The Runaway Belles
Meredith Rose - Saraswati Symphony - Jas Rocca
Blackboard Concert - Pipers Wierd - Women Who Drum
The Latrobe Federal Band - Sheffield Community Choir
Mountain Echoes - The Festival Choir - Celtic Sessions
Children's circus activities - Workshops - Poetry
Drumming circle - Great Food, Coffee
Festival Bar - Plus so much more



mountrolandfolkfest.org

A Kentish Lions Club Project



Sheffield Christmas Parade 2025

Friday 12 Dec at 6 pm on Main St.



Bring the whole family
Free BBQ, Fairy Floss
Photograph your kids
with Santa

Enjoy a great Christmas
celebration in Sheffield.



To Enter the Parade Contact Don Thwaites
0458343059 or donintas@gmail.com

This is a CHILD SAFE EVENT

GardenFEST 2025

Tickets & map from
Epicurean Cafe, 72
Main St, Sheffield.
Organised by Kentish
Garden Club!

SATURDAY &
SUNDAY
NOVEMBER 29-30
10AM-4PM | \$10

VISIT 7 LOCAL PRIVATE GARDENS - 0488 047 011

KENTISH PONY CLUB

This October has been a busy time for our Kentish riders. Three of our riders attended the Bakers beach endurance challenge, completing a 6km, 40km and 80km ride early in the month. The following weekend saw one rider attend the Fernpark Shield day.

On October 19, Kentish PC held an open gymkhana which saw over 40 riders of all ages attend in several different classes, including Hacking, jumping, games and for the lead rein riders, a fancy dress class was very popular with outstanding costumes. All the riders did themselves proud, many ribbons were won in all classes.



Our next rallies are on November 2 and 23.

Kentish Pony and Hack club would love to hear from anyone interested in joining. We welcome new

members from 5 to 80 years of age. We also support ticket to play vouchers for eligible members.

For more info, please call Karan on 0429 231 612.



SHEFFIELD CRICKET CLUB



While the Nook Cricket Club no longer operate, they have kindly arranged to set up Junior Cricket Development in our area for future generations.

Following the sale of their ground, Nook Cricket Club members Mark McGlasson, Rodney Johns and Mike Gibson were keen for the funds to be used for Junior Cricket Development in our local area.

Accordingly, they have gifted proceeds to the Sheffield Cricket Club on the basis that funds are used only for future Junior Cricket Development. A Trust Deed was set up in July to ensure that this is adhered to. Funds are invested with the interest earned, together with a small withdrawal of capital from the investment each year financing the club's junior program.

Sheffield Cricket Club Vice President Tim Irvine said the club was very excited and most appreciative of this offer.

“This will allow the club to put extra attention into growing our Junior Development Program for years to come,” he said. “A plan has been developed with focus on providing a broader cricket experience for all participants, boys and girls, with items such as specialist coaching, enhanced equipment and facilities.”

Tim said the club was investigating playing feature games against other Launceston and Hobart based clubs as well as the possibility of taking juniors to watch WBBL & BBL games.

“This certainly will be a game changer for junior players within our community who wish to have fun playing cricket with their friends,” he said. “This has come in time for club to progress these items this season which gets underway in early November. The legacy of Nook Cricket Club and the Kentish Cricket Association will remain alive through this remarkable gesture.”

* Sheffield Junior Training has now commenced and is held each Thursday at the Sheffield Recreation Ground.

Under 12s and Under 14s: 4-5 pm; Under 16s: 4.30-5.45. New players especially welcome.

Mobile Massage

Helen Wilson
 Kentishbury Mobile Massage
 Remedial Massage Therapist
 0428070368

**Please email your sports news to:
 editor@thekentishvoice.com.au**



The Wilmot Tourist & Progress Association Inc invite you to join us on **Saturday November 15th** to celebrate the 20-year anniversary of our wonderful Museum which showcases the history of the Wilmot Area since European settlement. 11am Official Unveiling of a commemorative plaque, followed by time to explore the Museum. Come chat with our volunteers, learn about the area's history and check out the family history resources we have. This will be followed by light refreshments at the Wilmot Hall at approximately 12.30pm and the cutting of the birthday cake.

2005 to 2025 PROUDLY PRESERVING OUR HERITAGE

This activity is supported by Arts Tasmania



Sheffield Art Gallery Working Art Space Sheffield
6 Pioneer Crescent Sheffield 0475 810 981

Members' Exhibition 2025



FAMOUS ARTISTS REIMAGINED



Oct and Nov 2025 - Open 10am to 3pm daily



Wanted Local Volunteer Committee Members

Taste of the N W supports local producers on the Tasting Trail and community events in Sheffield. We have local groups that support our event on the day, so organisational skills are valued in the lead-up to the event/s. So even if you are committed to another event on the day, your skills will be invaluable to Taste of the N W. Help promote local and help feed the many visitors who come for SteamFest and Mural Fest in the future.

For more information please contact Phil Dolan on 0455 502 542



Announcing Mt Roland Art Prize 2026



Exhibiting at Sheffield Art Gallery, Sheffield

Theme : 'Fragility'

Entry closes 9 January 2026

Exhibition opens: Saturday 21 February 2026 at 3.00pm and continues until 14 March 2026

Prize winners chosen by Public Vote
Sponsored by DULVERTON WASTE MANAGEMENT & WORKING ART SPACE, SHEFFIELD

Prizes Awarded : Saturday, 14 March at 2.00pm

- First Prize : \$3,000
- Second Prize : \$2,000
- Third Prize : \$1,000
- Fourth Prize : \$ 500

For further information email: mountrolandartprize@gmail.com

6 Pioneer Cr, Sheffield, 7306 - Tel: 0475 810 981
workingartspacesheffield.org.au

Background image courtesy Lindsay Gardagh

SHEFFIELD GOLF

Lu Proud, Geneen Duff, Winsome Sherriff and Susie Coombs represented our Club in the Barclay Shield Foursomes at Mowbray during September. They were thankful to have a sunny day which has been missing for a lot of our games recently.

Monthly Medal Winners

Members - Sponsored by IGA Everyday Sheffield was David Macmillan with 66 nett from Greg Collis 69 nett

Vets - Sponsored by Sheffield Mechanical and Tyres was won by Greg Collis with 67 nett from Glen Connors 68 nett on a countback from Martin Bakehouse 68 nett

Ladies - Sponsored by the Golf Club was won by Susie Coombs 74 nett from Winsome Sherriff 75 nett. Susie was also the winner of the Medals of Medals for the year, well done Susie.

Members

20/9 Very brave people ventured out on a very raw, cold day to play an Ambrose 3. The winning combinations were Stephen Harris, Adam Colgrave and Greg Collis with 56.167 from Scott Westbrook, Roland Proud and David Jago with 58.333

27/9 Stableford saw Ben Corbett have a great game scoring 43 pts from Doug Callander with 37 pts.

4/10 Ambrose 2 winners were Ryan Patterson and Scott Westbrook with 61.5 nett from Stephen Hope and Greg Collis 62.25 nett.

18/10 Stableford was won by Glen connors with 35 pts from Allan Duncan 34 pts on a countback from Peter Orchard 34 pts.

Vets 23/9 was a Stableford won by Brett Coombs with 37 pts on a countback from Craig Boucher 37 pts.

2/10 Rain played havoc this week and the Tuesday game was delayed until Thursday when 3 teams played in the Irish Stableford. The winners were Lyell Hardwicke, Brett Coombs and David Jago with 69 pts from Glen Connors, Gerry Hopkins and Doug Callander with 65 pts



Barclay Shield Foursome: Lu Proud, Geneen Duff, Susie Coombs and Winsome Sherriff.

14/10 Alan Brown Memorial Day. Alan enjoyed playing the Bogey which is not a favourite of most players but Doug Callander won with a score of "0" on a countback from Janice Williams "0" on a countback from Tony Wootton "0". Today the ladies combined with the Vets.

Upcoming events: November 15 is Sherriff Family Ambrose 4 Sheffield Golf Club 0418 199 873

Green Fees (per day): Adults \$20.00; Juniors \$5.00

RAILTON BARKRUNNERS

Dog owners have long recognised the importance of providing regular walks, playtime, exercise and outdoor adventure for their canine companions. An upside of this is the increase in physical activity and healthier lifestyles for dog owners.

Dogs have the capacity to improve human physical activity levels, helping to combat sedentary lifestyles, promote cardiovascular health and improve strength, endurance and flexibility. Beyond physical exercise, dogs provide emotional support, reduce stress, and foster social interaction.

Their companionship motivates individuals of all ages to stay active, leading to better overall physical and mental well-being".

At the Railton park run, we welcome park runners or walkers and our 'bark runners' (dogs on leads) every Saturday morning at the entrance to Sykes Sanctuary off Kimberly Road at 9am.

The dogs often steal the show with their chorus of excitable anticipation. They, too, have become a big part of our park run family, each with their own unique personality and quirks. Some sit with their 'mum or dad' as regular volunteers and others provide the stimulation to get up and get going each and every Saturday morning.

Many pooches join us at the local coffee shop for a post park run treat, more pats and a well-deserved rest after a brisk 5km run. This month we are giving our canine companions a huge 'shout out' and thank their owners for bringing them along and for being respectful owners.

Leading the charge: bark runner regulars, Walt (left) and Foxy wait patiently after a park run.



Diego Pellegrini
Remedial Massage Therapist

Back, Neck, Shoulder & Ankle
issues, Sciatica, Muscle Tears or
Strains including Hamstring,
Quad and Calf, Osteitis Pubis
& More

0434 053 971

DPRMT

drpellegrini_tutamail.com

496 Lower Beulah Rd
LOWER BEULAH 7306

COMMUNITY NOTES

WILMOT COUNTRY MARKET

After the wonderful success of the Spring Market, Wilmot Country market is back on Saturday, **December 6**, with a wonderful twilight market!

The Summer market is packed full with over 30 stalls, including, hot food, coffee, gourmet treats and gifts.

Combine this with the Bricktasia event hosted by Brick Sandwich in the back room and the wonderful geology display on the stage and you have a shopping wonderland for all ages!

Adding to the spirit of Christmas, market newcomer Wilmot Hills Distillery will be joining the market with their wonderful range of gin products and wines.

Come along and enjoy an evening under Mt Roland while you enjoy great food, live music and a spirited vibe.

WORKING ART SPACE SHEFFIELD

Sheffield Art Gallery – 6 Pioneer Crescent, Sheffield

Famous Artists Reimagined

For the months of October and November the Gallery will be exhibiting the works of many local artists. The theme is famous art works reimagined. There will be a “People’s Choice” prize and you are invited to come and vote for your favourite.

Opening hours: 10 am to 3 pm daily and entry is free of charge.

Working Art Space – 4-6 Albert Street, Sheffield

Printing classes: Every Tuesday between 10.30am and 2.30pm. Minimal cost of \$3.00 per person to cover inks and paper.

Interested? Contact Fay on 0400 491 272 or email faylilly@hotmail.com

Botanical Drawing: Saturdays from 1-3.30pm

If you would like to take part, please contact Colette Binder on 0439 426 665 for more information.

On Tuesdays and Wednesdays please feel free to pop by our Albert Street Gallery to view our art displays including pottery creations in progress.

KENTISH PROBUS CLUB

The next meeting of the Kentish Probus Club will be Tuesday, November 11, at 10am at the Sheffield Bowls Club.

The Guest Speaker Jean Hollebhone from Canada. The outing will be a luncheon to be at Jo Jo’s Café Wesley Vale.

Visitors are always welcome. For further information, please contact Annelise on 6496 1220.

HUB REPORT

Thank you everyone for your donations, they continue to keep our volunteers busy.

Recent donations

- Sheffield Cricket Club \$2000.
- Sheffield School Presentation Day Awards \$1350.
- Sheffield School Junior Cattle Handlers Show \$1000.

We are now putting our Christmas items out.

Thank you for your support as we donate into our Kentish community.

- *The Committee*

RAILTON MARKET

The Friendly Market will be held on Saturday, **November 8**, at the King’s Hall from 9am to 1pm.

We will have unique, hand-crafted goodies for sale, as well as plants, fruit & veg, honey, cakes and jams. A few new stallholders will be joining us this month, with splash fluid art and felting among the highlights.

The supper room will be open for people to explore Railton’s history through the photo exhibition.

Come along and do some early Christmas shopping with a wonderful selection of candles, jewellery, knitting and handbags.



KENTISH MUSEUM

Kentish Museum is re-opening in January 2026 and volunteer staff are needed. Register your interest to volunteer now.

Training provided at the museum.

Open Days to be held in November and December 2025.

For more details, please contact Kentish Council, Economic Development Officer Greg Fenwick on email: council@kentish.tas.gov.au or phone: 64910200, mobile: 0499 887 188.

SHEFFIELD RSL SUB-BRANCH

The sub-branch has enjoyed a fairly quiet period lately and resting up for the busy period ahead. Remembrance Day is fast approaching and the Memorial Service will be held at the Sheffield School on **November 11**.

Anyone wishing to attend the service is requested to be seated by 10:45am.

The sub-branch’s next meeting will be held on Tuesday, November 4, at 19:00 instead of the usual Monday due to the public holiday. All are welcome.

Lest We Forget.

- *Stuart Wilson, Secretary*

STEAMFEST

March 7-9, 2026, Spring Street, Sheffield

SteamFest 2026 is just around the corner, and we’re calling on our wonderful community to help make it happen. Each year, volunteers are at the heart of SteamFest helping everyone enjoy this celebration of steam heritage and innovation.

Whether you can spare a full day or just a few hours, your time makes a real difference. To find out more, please contact Jill Ridgway on 0448 631 922.

WILMOT HISTORIC MUSEUM

Opening hours Wednesday to Sunday 10am to 3pm.

KENTISH GARDEN CLUB



**Kentish
Garden Club**

At the Kentish Garden Club's October meeting, Stephanie Mason from Fuchsia Fantasy nursery

at Lilico explained about how to grow fuchsias and showed how to train a fuchsia as a standard. The trick is in selecting the right plant to start with. A fuchsia with a long stem and no basal branching is ideal for growing as a standard. Remove side growth and support the stem with a small stake. Encourage strong vertical growth with good feeding and regular watering. Once the top shoot reaches the desired height, start pinching back the shoots to stimulate branching and form a large head. Fuchsias with multiple stems at the base of the plant are well suited to growing as hanging basket plants. The more tip pruning that's undertaken, the more branching and flowering (although flowering is delayed).

Keep fuchsias in a frost-free position with morning sun and bright light but shelter from hot sun and drying winds. Keep plants well-watered and fertilise through spring and summer. Regularly remove spent flowers and discoloured leaves.

The next meeting of the Kentish Garden Club is Thursday, November 13, from 7.30pm for a talk on organic growing with Bronwyn Holm from Team Earth Food. The meeting will be held at the Bible Chapel, 45 High Street, Sheffield and is preceded by a visit to a local garden at Nook from 6pm.

All welcome. For more information, call Jennifer Stackhouse (KGC President) on 0488 047 011.

KENTISH SCOUTS

Scouts can do anything! Almost. Unfortunately, we can't control the weather so our statewide Cuboree camp was cancelled this year much to the disappointment of everyone. However our cubs do have a 'Do Your Best' camp at the beginning of November where they will take part in youth-led activities, literally doing their best whether it be the first time they have tried the activity or the 100th.

Our scouts had a STEM night this week (Science, Technology, Engineering and Math) where they discovered, in true Myth-busters style, that failure is always an option when it came to making Elephant Toothpaste. They successfully made ice cream in a bag, which they quite happily polished off. Our cubs and scouts will be participating in cooking, bike riding, tree planting with Landcare and Christmas craft nights over the next month along with a hike up Mount Roland mid-November.

-Tanya
Scout Chairperson
0438 559 317



Sheffield Fruit & Veg

Mon - Fri
8:30am - 5:30pm
Saturday 9am - 1pm
Closed Sunday

Phone - 0419 506 405
Email -
sheffieldfruitandveg@outlook.com

KENTISH MEN'S SHED

There is still quite a lot of activity going on at our Mens Shed, may that ever be the case, Builder Bob.

Read is working wonders on the little railway carriage currently to be seen hard by our shed. Given a little help, Bob expects that we can have the topside shipshape and that Redwater can have it ready to roll in time for SteamFest.

In other works, we are making display stands for the Art Centre using as a template the work of the late Johanne Phieffer whose legendary skills are well remembered.

In Lower Barrington we have constructed a chook run for Jan McKay whose chickens, we understand, provide lovely eggs. Jan is the daughter of the Late Doctor Sender whose dedication to our district is yet remembered by our senior citizens.

We were also pleased to have a visit from Upper House Independent Casey Hiscutt who responded to our request to talk with us on the vexatious question of the proposed (Hobart) stadium. Mr Hiscutt showed that he has made careful examination of the information available to him and helped our members to better understand both sides of the debate.

We can but hope that the outcomes arrived at will best serve our island and the welfare of all.

Other visitors were Our Lady Mayor Kate Haberle and General Manager Kentish/Latrobe councils Mr Jason Browne who took time to share views on planned developments at our Shed over morning tea.

We now look ahead to the coming Medaeval Festival on Saturday and Sunday, November 8 and 9, when our Blacksmiths will be repairing dented chestplates and sharpening battle axes. Our master smithy BJ Pedersen will be spit-roasting a pig. A good family outing?

Visitors are always welcome to our Shed. For information, please call Peter on 0439 537 386.



The Kentish Community Men's Shed recently gave a donation to the Kentish Lions Club's Breakfast Club program which enabled them to buy a trolley to transport food.



RAILTON BOWLS

Our season has commenced and the weather has been very tricky, all our teams have started out very well, the ladies on Thursday had a washout first game, but since then they have put together two great wins. We decided this year to allow other players the opportunity to play other positions, and they have really stepped up, well done. Our Saturday players have also put together two great wins, well done everyone.

Our new uniforms should be here soon, I am sure we will all look great in them. Thanks again to the sponsors Simmons Wolfhagen Lawyers and Kentish Council.

We have our Melbourne Cup coming up at the club, fancy hats and some fun games to be enjoyed, with afternoon tea to follow.

Thank you to all our committee, selectors Darryl and Greg, Dennis and Joel, Wendy and Robyn, hard job but thank you for taking on a hard position.
- Noelene Purton Secretary

ADVERTISEMENT

THE WORLD OF WASTE: WHERE THE WEIRD THINGS GO? Part 1

Disposing of some items can be tricky – not everything is safe in your kerbside bin.

To avoid damage to your property and ours, here are some options for the tricky stuff:
Household hazardous waste – we all have leftover chemicals we aren't planning to use in the cupboards at home and in the shed. If it is less than 20 litres or 20kgs per item, you can dispose of it for **FREE** at **Sheffield Waste Transfer Station on Friday 14 November between 1pm and 4pm.**

If that date doesn't suit what about the **Latrobe Recreation Reserve on Saturday 15 November between 10am and 2pm**, or the **Spreyton Waste Transfer Station on Friday 14 November between 9am and noon?**

You can use any other event on the North West Coast so check out <https://rethinkwaste.com.au> for other options.

You may also be able to arrange a household collection by appointment at other time by emailing admin@dulverton.com.au



**Lower Barrington
Community Hall
Market**

Saturday 29th November
9am - 1:30pm
Bronwyn: 0407 726 669
For Further Information



FREE NOVEMBER HEALTHY OUTING:

10.30AM - 2.30PM
MONDAY 17TH NOVEMBER

FANCY PICNIC AT BELLS PARADE,
LATROBE

MEET @ KENTISH HOUSE
@ 10.15AM FOR BUS

SPOTS LIMITED,
BOOKINGS ESSENTIAL:

CASSANDRA 0447 325 343
RUBY 0497 780 216





Weed alert: foxgloves in flower

Springtime for Mount Roland Land Care is probably the busiest time of the year, with tree planting, weeding and the group's Annual General Meeting.

Our weeding volunteers have been busy, with five weeding bees held in recent weeks, four tackling foxgloves and one day on Montpellier broom growing in the Reserve at two spots close to Claude Road.

Group volunteers meet at the Claude Road Hall on a Saturday morning, before travelling up both Kings Road and McCoy's Road to tackle foxgloves growing up the Mountain and close to the reserved areas.

These foxgloves are a real and current threat to Mount Roland - if foxgloves become established in the Reserve they will be very difficult if not impossible to control.

Group members have volunteered more than 100 hours of on ground weeding this spring, often scrambling through steep and difficult terrain to remove the foxgloves before they have a chance to set seed.

During November foxglove flowers are likely to start popping up, not just on Mount Roland, but across many areas in the Kentish Municipality, from Leary's Corner right through to Acacia Hills.

Foxgloves used to be regarded as a strikingly beautiful cottage garden plant, but in recent times they have been recognised as a major threat to our natural environment.

Foxgloves are now officially a Declared Weed in Tasmania and growing foxgloves in many areas, including much of Kentish, is now legally prohibited by the Tasmanian Government.

To find out details on this, go to: <https://nre.tas.gov.au/invasive-species/weeds/weeds-index/declared-weeds-index/foxglove-digitalis>

The Mount Roland Land Care AGM was held on Sunday, September 28, at Claude Road Hall, and was attended by 51 people. The meeting heard reports on the group's activities over the past 12 months, and elected a Governing Committee. Executive members are: Greg Taylor (President), Barbara Alsop (Vice President), Geoff Page (Treasurer) and Janet Dunbabin (Secretary). Other Governing Committee members are Donna Reedy, Rob van der Weide, George Callister, Don Thwaites, Tracy Kelly and Noel Meyers.

Clive Bott is an Honorary Committee member and Councilor Terry Hughes is the Council rep. Many thanks to Mayor Kate Haberle for assisting with the conduct of elections on the day.

Attendees at the AGM were welcomed by live music from Jacob Boote and son Oscar, and after the official business were treated to a range of engaging presentations, including an update from Kristen Lang about her wonderful 'Life on the Mountain' project, and a special presentation by Josh Gordon from the Tasmania Wildlife Hospital.

Our final tree planting day for 2025 is Saturday, November 1, at a Claude Road property, and takes the number of trees planted this year to about 2100. This program has been very successful and has involved hundreds of people over the past three years.

We're pleased to announce that our tree planting will continue in 2026 - planning is already underway.



Tree planting on the Dodder Rivulet in Sheffield.

CALD SOCIAL GROUP



4.30 PM - 6 PM
3RD MONDAY OF THE MONTH
16 - 18 STATION STREET, SHEFFIELD

cultural and language diverse community members are invited to attend a monthly social group

欢迎来自不同文化和语言背景的社区成员参加我们的每月社交聚会

CHÚNG TÔI TRÂN TRỌNG MỜI CÁC THÀNH VIÊN CỘNG ĐỒNG ĐẾN TỪ NHIỀU NỀN VĂN HÓA VÀ NGÔN NGỮ KHÁC NHAU THAM GIA NHÓM GIAO LƯU HÀNG THÁNG

さまざまな文化や言語的背景を持つ地域の皆さまを対象に、月に一度の交流会へのご参加をお待ちしています

विविध भाषा र संस्कृतिका समुदायका सदस्यहरूलाई मासिक सामाजिक समूहमा सहभागी हुन आमन्त्रण गरिन्छ।



LATROBE SADDLERY

Alan & Anita Geddes

Factory 13, 15 Bay Drive
Spreyton TAS 7310

Mobile 0418 467 655

www.latrobesaddlery.com.au

Take the bushfire ready challenge

The best time to deal with a bushfire emergency is before it happens - know your risks, where to go to, how to stay informed and have a plan ready.

As Tasmanians head into summer – and its increased bushfire risks – local brigades across the Kentish region are urging residents and property owners to act now to prepare for the season.

Tasmania Fire Service Acting Community Preparedness Officer North-West/North Luke Bennett said brigades, including Kimberley, Sheffield, Railton, Beulah, Wilmot/Cradle Mountain, Claude Road and Lorrina, were ready to help their communities.

“Being prepared means you’re better equipped to act quickly and protect yourself, your loved ones, and your property,” Luke said.

“One way to ensure your property is ready is to take the Tasmania Fire Service’s Bushfire-Ready Challenge, which is now open to all households.

“Participants who register will receive weekly challenges via an online platform, guiding them through key preparation steps, including knowing your bushfire risk, creating a bushfire plan, completing a bushfire property assessment and assembling an emergency kit.”

Luke said the program encouraged households to not only learn about bushfire risks, but to take action and build resilience ahead of the fire season.

Railton responds to four call-outs in five days

From October 18 to 23, Railton Fire Brigade responded to four call-outs. One was within the Railton area, while the other three supported neighbouring brigades in Latrobe, Sheffield, and Kimberley. These incidents included:

- Unattended and out of control burn
- A planned burn near a roadside, not registered with FireComm and reported by a concerned passer-by
- A fire at Dulverton Waste Management
- A farm machinery fire

Despite wet ground conditions, strong winds can still fuel fires and raise concerns. Some hazards our firefighters face include:

- Power poles catching alight from nearby burns
- Electric fencing
- Increased snake activity
- Bird nests quickly forming in machinery and chimneys

Even controlled burns can produce heavy smoke if the fuel is damp, which may prompt concerned citizens to call us. This can result in volunteers being dispatched unnecessarily.

Registering your burn helps avoid this. It lets them know the fire is being managed by the landowner and may prevent your local brigade from being called out.

You can register your burn online at <https://www.service.tas.gov.au/services/emergencies/fire/register-a-burn/> or 1800 000 699.

Stay safe:

- Keep up to date at TasAlert.com
- Download the TasAlert app
- Look out for your neighbours, it could be a busy fire season.



Crews tackle a bushfire at Margate.

Photo: DPFEM/Adam Reibel

To request a printed Bushfire Safety Guide, including a “My Bushfire Plan” section, contact the North-West Regional administration team on 6477 7250.

And you can learn more online at bushfire.tas.gov.au/bushfire-challenge/bushfire-ready-challenge.

Local brigades are also reminding residents of the importance of registering burns year-round.

“Volunteers are community members, too,” Luke said. “Registering your burn might save them from being called out unnecessarily, missing dinner, or their child’s sporting event.

“Equally important is staying with your burn and ensuring it is fully extinguished. If weather conditions change in the days and weeks following, especially with heat or wind, please check the burn site again.

“Let’s work together to keep our communities safe.”

To learn more about bushfire safety and the Bushfire Ready Challenge, contact your local brigade or visit the Tasmania Fire Service website at www.fire.tas.gov.au

Visiting service

If you need help with Centrelink, Medicare and Child Support payments and services, we plan to visit your community soon.

**Services Australia will be visiting
Sheffield and Railton.**

**The team will be located at the following venues
and times:**

TUE 12th November 2025

**Kentish House, Sheffield 09:30 am to 11 am
Kings Hall, Railton 12:00 pm to 12:30 pm**

Please phone Cassandra at @Kentish House on 0447325343 to book a specific appointment time, or walk-ins are welcome.



servicesaustralia.gov.au

KENTISH COUNCIL

RATES REMINDER

A reminder that the second rate instalment for the 2025/2026 financial year was due on or before **31st October 2023**. Should you be experiencing financial difficulties, please contact our Rates Officer to discuss payment arrangement options.

LIFT THE TONE CAMPAIGN



YOUTH SCHOLARSHIP 2026

Council is offering a \$1,800 scholarship to a university student or a student attending an approved education facility in 2026. The scholarship is to help with expenses associated with relocating from Kentish. The student must:

1. Be enrolled or be accepted for enrolment for full-time study at either University, TAFE or an approved education facility in 2026;
2. Have been a Kentish resident for the last two years of their secondary studies;
3. Intend or be living away from home as a result of their studies; and
4. Be under the age of 25 as of 1st January 2026.

All applications must be on the appropriate form, which can be obtained from Council's website www.kentish.tas.gov.au or by phoning 6491 0200. The closing date for applications is **6th December 2026**.

MATURE AGE SCHOLARSHIP 2026

Council is offering a \$1,800 scholarship to a mature-age student attending an approved educational institution in 2026. This scholarship is to help with expenses for students associated with undertaking their studies or reskilling. The student must:

1. Be enrolled or accepted for enrolment for full-time or part-time study at either University, TAFE, apprenticeship, heavy vehicle training, or another approved education facility in 2026;
2. Have resided in the Kentish Municipality for at least the last two years;
3. Be over the age of 35 as of 1st January 2026; and
4. Be unemployed, work part-time, or demonstrate how the scholarship would assist in retaining or finding ongoing employment.

All applications must be on the appropriate form, which can be obtained from Council's website www.kentish.tas.gov.au or by phoning 6491 0200. The closing date for applications is **6th December 2025**.

2026/2027 BUDGET – CALL FOR SUBMISSIONS

Council invites community members to submit project proposals for consideration in the 2026/2027 operating budget or capital works program. Each submission will be assessed using objective criteria and considered within Council's 10-year planning framework.

Submissions should clearly outline:

- Project location and scope
- Estimated cost
- Expected benefits (including safety, social, and environmental impacts)
- Any other relevant details to support informed decision-making

Deadline: Monday, 1 December 2025

Submit to: Team Leader Finance, Kentish Council, PO Box 63, Sheffield TAS 7306 or via email: council@kentish.tas.gov.au

NEW DEFIBRILLATORS AT THE SHEFFIELD VISITOR INFORMATION CENTRE

There have been two defibrillators installed at the Sheffield Visitor Information Centre in case of emergency. This unit is now available for the local community to access — hopefully never needed, but it's reassuring to know that such an important, life-saving device is on hand should an emergency occur in Sheffield.

WILD MERSEY MERCHANDISE NOW AVAILABLE

Wild Mersey MBT retail items are now on display and ready for purchase at our Visitor Information Centres. If your mountain bike gear is looking a little worn from all those adventures, pop in and pick up a fresh kit! We also have a selection of water bottles, stubbie holders, and openers — perfect for keeping refreshed after coming back from the trails.

AUSTRALIA DAY & VOLUNTEER AWARDS

Nominations are now being called for –

- Australia Day Citizen of the Year;
- Young Citizen of the Year;
- Community Event of the Year,
- Volunteer Awards for 500, 1,000, 2,000, 3,000, 5,000 and 10,000 hours of service, and
- Recognition of Outstanding Service by a Volunteer.
- Volunteer Encouragement Award

Guidelines and application forms are available from Council's website at www.kentish.tas.gov.au or by contacting Council on 6491 0200 during business hours. Applications close on **Monday, 1 December, 2025**.

NEXT COUNCIL MEETING

The next ordinary meeting of Council will be held at the Council Office on **Tuesday, 18 November, 2025** commencing at 6:00pm.

Mayor's message: come say Hello



I trust everyone is thinking that Spring is here and for the last few days I think that may be the case. The weather has been rather trying with the severe winds and rain but the sun is shining and we can be thankful that the fresh air and natural beauty around us will bring us a renewed hope for the rest of the year.

We only have to drive around the district to see what a wonderful place we live in. The waratah is in full bloom and looks magnificent as do the magnolia trees.

The Garden Club will be holding their annual GardenFEST at the end of November. This is an opportunity for everyone to travel around Sheffield and visit the properties of our local residents who open their gate and allow visitors to wander around and admire the gardens and discuss the variety of plants and even buy a few cuttings.

Muralfest will begin on Sunday, November 2, when nine artists begin painting their mural over the course of seven days. On Saturday, November 8, at midday it will be brushes down and then the wait to see who wins the top prize by public vote.

From noon-2pm there will be music in Mural Park and at 2pm the winner will be announced and an auction of the Mural Miniatures.

Come along during the week and watch the artists complete their mural. They love talking to the locals about their creation based on the theme *Amazing Discoveries*.

Thank you to all the volunteers who have put their name down to assist with the many jobs during the week. Your help is invaluable.

The Council will be holding two community information evenings before Christmas. The first will be held on October 30 at the Lower Barrington Hall at 7pm and the next one will be held on November 27 at the Wilmot Town Hall.

An Open Day will be held at the Railton Neighbourhood Centre on Thursday, November 27, from 10am to 1pm. I am planning to be in attendance and would love to meet any new residents to the Railton area.

If you have some time during the day, please drop in and say hello so that connections can be made with local residents and we have a chance to welcome you to the Kentish Municipality.

During Muralfest, I will be at Mural Park on Monday, November 3, from 11am to 3pm. If you are new to the district, I would love you to come along and introduce yourselves so that I have a chance to meet you and assist with anything as you settle into our municipality.

With students and staff back at school for Term 4, I would like to wish you all a very successful term with many activities being planned over the course of the term.

Keep an eye open for all the upcoming events that will be taking place before Christmas. It will be a busy time but a time when we can come together and enjoy the camaraderie through various social gatherings.

- **Kentish Mayor Kate Haberle**

Ageing Nook Rd bridge set for upgrade

A 67-year-old bridge on Nook Road will soon be upgraded after decades of service, with funding through the federal government's Roads to Recovery program and delivery by the Kentish Council.

Built in 1958, the bridge carries traffic over a small creek between Little Nook Road and Jarmans Road.

While it has served the community well, the ageing concrete and stone foundations are now cracked, displaced and beginning to fail.

Federal Member for Lyons, Rebecca White, and Kentish Mayor Kate Haberle recently visited the site to inspect the ageing bridge and discuss the planned upgrade.

Kentish Council will replace the bridge with a stronger culvert - a large concrete structure designed to improve water flow and withstand future conditions. The new culvert is expected to serve the community for up to 80 years, ensuring safe and reliable access for generations to come.

The \$85,000 project is scheduled for delivery this financial year and work is expected to begin once the tender process is complete.

Rebecca White said the bridge had reached the end of its life.

"Replacing it with a modern structure ensures the road will remain open and safe for residents, farmers and businesses for generations to come," she said.

"Through Roads to Recovery, the Government is backing local councils to fix ageing infrastructure. This investment will deliver a safer, longer-lasting structure for everyone who uses Nook Road."



Kentish Mayor Kate Haberle (left) and Federal Member for Lyons Rebecca White at Nook Road bridge.

Sylvia celebrates her centenary



Sylvia Duncan was born on August 18, 1925, at Leven Bank Hospital to Oliver and Annie Page. She was the fourth child out of six. She often wondered in later times why she was given the name Sylvia when she would have preferred Betty.

An unusual incident was she wasn't named until a month later and registered then as well which caused some confusion when she was admitted to hospital late last year.

She lived with her family in Ulverstone until she was six years old when they moved to Melrose. Sylvia started school that year at the local Melrose Primary School where she remembers having three to four teachers that year. After a year or so they moved to Upper Castra where she did the rest of her schooling.

At the age of 13 or 14 she had enough of school and wanted to help her mum milk the cows and other farm work.

In 1942 they moved to Wilmot and Sylvia remembers walking the horse and dog with her brother Stan from Upper Castra to Wilmot which was quite common in that era. While attending church at Lower Wilmot she met Ray Duncan and in April 29 1948 they were married.

They lived in the house where she currently resides still. In 1949 their son Rex was born, followed in 1951 a beautiful little girl called Margaret so legend has it. What we do know is there was

a massive snow fall in Wilmot that year. This marriage lasted 48 years before the sad passing of Ray in 1994.

On a happier note in 2001 on the 25th of June the first grandchild, Hayley, was born to Rex and Merlin, followed by Andrew six years later.

One of Sylvia's earliest memories was of the circus visiting Ulverstone arriving by train. Sylvia remembers going with her father to see the animals being unloaded which included tigers. Another time she travelled from Ulverstone to Devonport on a freight train in the guard's area at the back. She started to worry what would happen if the train became uncoupled and would she be forgotten.

She remembers polio going through the school at Upper Castra and Bill Leary was the only one impacted. She remembers picking blackberries with her brother and sisters at Upper Castra. In 1939 when the war started, her windows had to be darkened and food was rationed although they were luckier than most being able to produce food.

Through the war years to raise money concerts were held, Sylvia played the banjo, Leila played the violin, Thelma played the auto harp - a very musical family. Money raised went towards the comfort fund.

After arriving in Wilmot, she was walking to town with her sister and she remember meeting a lady pushing a pram. Some time later she found out that it was Mrs Fred Hayes. She looked forward to moving to Wilmot because there was power there.

She recalls farming life being hard but enjoyable doing farm chores, including milking cows, picking up spuds, sowing fertiliser, cutting ferns and ferreting rabbits.

The day the war ended, her sister Leila was married. Sylvia had to wear a crepe dress and was worried that it would shrink if it got wet as it had rained all day the day before.

Sylvia remembers many happy family times spent with the Bakers and Baldocks at the Lakes camping. At home, family and friends called around in the evenings, including the Charlstones families. Much time was spent playing board games.

Sylvia would like to thank everyone who came to celebrate this happy occasion and thanked everyone who provided food.

A colorful advertisement for 'Jingle Slay Bootcamp'. The text is framed by a decorative border of colorful lights and holly leaves. At the top, it says 'Jingle Slay.' in a large, stylized font. Below that, it says 'BOOTCAMP' in a bold, black font. The ad includes details about the program: 'WED 12 Nov - MON 15 Dec...', 'MON & WED 630-730am', 'fitness + connection + fun', 'JOIN OUR 5x WEEK COMMUNITY CARDIO & STRENGTH-BASED FITNESS PROGRAM 'JINGLE SLAY' TO GET INTO FESTIVE-SHAPE AIMED @20-55YR OLDS.', '\$10/CASUAL SESSION or \$80/5wk UPFRONT DISCOUNT', and '...LIMITED SPACES 6491 2740 RURAL HEALTH TAS TO REGISTER'. The logo for 'RURAL HEALTH TASMANIA INC.' is at the bottom right.

Wilmot Primary farms learning options

Wilmot Primary School is a place of learning and what sets Wilmot apart is the tiny school context. Students are supported in safe and inclusive environments.

Wilmot encompasses a 25 acre farm, which is used in teaching and learning programs. The school is very fortunate to have the support of the Wilmot community where students, staff, and community members come together to support the ongoing running of the school farm throughout the year.

The school's Food and Fibre program is a standout feature, offering students immersive, hands-on experiences that connect curriculum with real-world skills. Teacher Michelle Hutt coordinates this program.

From planting and harvesting crops to caring for livestock, students are actively involved in every stage of the food production process. This practical learning not only deepens their understanding of agriculture and sustainability but also fosters a strong sense of responsibility and teamwork.

Community involvement is a cornerstone of the program. Parents, staff and volunteers regularly lend their expertise and time, transforming the farm into a shared space of learning and connection. Whether it's helping with feeding on weekends or supporting with the delivery of resources outside of hours, the community's contribution is invaluable - and appreciated.

Complementing the farm's educational value is the school's Healthy Lunch initiative; each Wednesday students plan and cook a meal that is shared and eaten together. Much of the produce is grown on site, giving students a direct link between the food they grow and the meals they enjoy.

This initiative not only supports student health and wellbeing but also reinforces the importance of healthy eating habits from a young age. Last term meals cooked by the Senior class included Connor's 'beef bulgogi', Lucas's 'taco-diles and popcorn croc', Logan's chilli dogs and Oliver's pork curry.

Acting Principal Marya Bell says the program is a special feature of the school. "It's about empowering students with knowledge, skills, and a sense of purpose," she said.

"They're learning where their food comes from, how to care for the environment and how to work together to achieve

Get a taste of the NW

The Taste of the North West concept was developed by a core group of local producers to provide an opportunity to showcase the unique quality of locally produced beer, wine and spirit, accompanied by where possible, locally sourced food, all to be experienced at a Taste Event.

Ten years on, the success has become part of the fabric of Sheffield and often in support of other unique events such as Mural Fest and Steam Fest.

The annual event is managed by a core group of volunteers operating as a committee of whom half are stallholders, with a diverse skillset that provides a great forum to further develop the event.

Bringing fresh perspectives and energy from new committee members would help ensure the long-term sustainability of the event. By getting more locals involved, we hope to continue showcasing the region's best produce and keep the festival thriving for years to come.

We are currently seeking interested folk to join and to be part of the future of the Taste of the North West.



something meaningful." She said the school was very appreciative of Kentish Lions' Breakfast Club, which is now offered twice a week.

If anyone is interested in supporting the school through Breakfast Club and/or the school farm, please contact Marya Bell on 03 6492 1421.

A colorful flyer for Wilmot Country Market. The flyer features a green flower icon, the text "Live Music" and "Hot Food" in pink, "Wilmot Country Market" in large blue letters, "Sat Dec 6th 3-7 PM" in blue, "Contact: Idell Wadley wilmotcountrymarket@gmail.com" in blue, a pink flower icon, a Facebook logo, "Back Room! Bricktasia Displays, builds & prizes" in black, a "BRICK sandwich Creative Food" logo, and "Wilmot Memorial Hall Main St, Wilmot" in black.

KENTISH HEALTH SERVICES & PROG

Every Monday	Every Tuesday	Every Wednesday	
<p>10.00am – 3.30pm: CHSP @ KAAC *</p> <p>6.30pm – 9.45pm: Navigating Relationships Peer Group Chat (12-25's) @ Headspace online</p>	<p>9.00am – 11.00am: Playgroup (0-5's) @ Kentish House</p> <p>10.00am: Mountain Learners Homeschool Meet @ Kings Park</p> <p>10.00am – 3.00pm: CHSP @ KAAC *</p> <p>10.30am-11.30am: Fitness Class @ LBCH */**</p> <p>6.30pm – 9.45pm: Qheadspace Peer Group Chat (LGBTIQA+ & allies, 12-25's) @ Headspace online</p>	<p>9.30am – 11.00am: Food pick up for Kentish residents @ KH</p> <p>10.15am: Ladies Social Badminton @ LBCH *</p> <p>6.30pm – 9.45pm: General Coping Peer Group Chat (12-25's) @ Headspace online</p> <p>6.30pm – 9.45pm: Adults Supporting Young People (for family & other adults) @ Headspace – text-based group chat</p>	
Specific Mondays	Specific Tuesdays	Specific Wednesdays	
<p>3rd – Public Holiday</p> <p>10th 9:00am – 12:00pm: North West Community Legal Centre @ Kentish House**</p> <p>9:30am – 11:00am: Justice of the Peace @ Kentish House</p> <p>3:00pm – 4:30pm: Social Hub (for neurodiverse young people, 12-18's) @ Kentish House</p> <p>17th 10.30am – 2.30pm: Healthy Outing to Bells Parade Picnic @ Kentish House **</p> <p>4.30pm – 6.00pm: Culturally & Linguistically Diverse Social Group @ Kentish House</p> <p>24th 9:00am – 12:00pm: North West Community Legal Centre @ Kentish House**</p> <p>9:30am – 11:00am: Justice of the Peace @ Kentish House</p> <p>3:00pm – 4:30pm: Social Hub (for neurodiverse young people, 12-18's) @ Kentish House</p>	<p>4th 9.00am – 11.00am: KIDS Parenting Support (Playgroup) @ Kentish House</p> <p>18th 12.30pm – 1.30pm: Services Outreach (Kentish House, Services Australia, Women's Legal Tas, APM, Rural Health, NDIS Mission) @ Wilmot Memorial Hall</p> <p>25th 9.00am – 11.00am: KIDS Parenting Support (Playgroup) @ Kentish House</p> <p>11.00am – 12.00pm: Paws & Grub (Kentish House, RAW, Anglicare KIDS, Women's Legal Tas, APM, Rural Health) @ Claude Road Hall</p> <p>1.00pm – 2.00pm: Services Outreach (Kentish House, RAW, Anglicare KIDS, Women's Legal Tas, APM, NDIS Mission) @ Lorinna Community Hall</p>	<p>5th 5.00pm – 6.00pm: Digital Health Support Hour @ Kentish House</p> <p>12th 9.30am – 11.00am: Services Australia @ Kentish House</p> <p>10.00am – 12.00pm: NDIS Mission Australia @ Kentish House</p> <p>12.00pm – 12.30pm: Services Australia @ Kings Hall, Railton</p> <p>2.00pm – 3.00pm: Kentish Carer Support Group feat. Services Australia / Medicare @ Rural Health Sheffield</p> <p>19th 5.00pm – 6.00pm: Digital Health Support Hour @ Kentish House</p> <p>26th 9.30am – 11.00am: Rural Health (Blood Pressures) @ Kentish House</p> <p>5.00pm – 6.00pm: Digital Health Support Hour @ Kentish House</p> <p>Half-price public transport fares have been extended until 20 June 2026.</p>	<p>6th 3.00pm Youth</p> <p>4.00pm Corr</p> <p>13th 10:00pm Child</p> <p>11.00pm & Be</p> <p>3.00pm Town</p> <p>3.30pm Youth</p> <p>3.30pm Craft</p> <p>Libra</p> <p>20th 4.00pm Corr</p> <p>27th 11.00pm Grub</p> <p>Angl</p> <p>Aust</p> <p>LBC</p> <p>4.00pm Corr</p>

GRAMS CALENDAR – November 2025

Every Thursday	Every Friday	Every Weekend
<p>9.00am – 1.00pm: Kentish Men's Shed</p> <p>10.30am-11.30am: Fitness Class @ LBCH */**</p> <p>6.30pm – 9.45pm: Yarnspace Peer Group Chat (A&TSI 12-25's) @ Headspace online</p> <p>6.30pm – 9.45pm: Work & Study Peer Group Chat (12-25's) @ Headspace online</p>	<p>9.00am – 11.00am: Social Craft Group @ Kentish House</p> <p>10.00am – 11.00am: Cuppa & Kids (Railton Parents Group) @ Limestone Bakery Cafe</p> <p>2.00pm – 3.00pm: The Chatty Cafe @ Turnbull's Pharmacy</p> <p>2.30pm: Mountain Learners Homeschool Meet @ Kings Park</p> <p>5.30pm – 7.30pm: Munting Taekwondo @ Sheffield School Gym *</p>	<p>Saturday</p> <p>8.50am: Railton Park Run @ Sykes Sanctuary, Kimberley Rd</p> <p>9.00am – 12.00pm: Kentish Men's Shed</p> <p>12.30pm: Social Bowls @ Sheffield Bowls Club *</p> <p>Sunday</p> <p>10.00am: Social Pickleball @ Railton Rec & Comm. Centre *</p>

Specific Thursdays	Specific Weekends
--------------------	-------------------

<p>10pm – 4.30pm: Green Room Ch Space @ Green Room</p> <p>5pm – 6.00pm: The Quiet Corner @ Kentish House</p> <p>10am – 11.30am: Parents & Children's Activities @ Lorinna Community Hall</p> <p>10am – 2.00pm: Aged Care Beyond Expo @ Sheffield Community Hall</p> <p>10pm – 4.30pm: Green Room Ch Space @ Green Room</p> <p>10pm – 5.00pm: Textiles Sewing Group @ Sheffield Library</p> <p>10pm – 6.00pm: The Quiet Corner @ Kentish House</p> <p>10am – 12.00pm: Paws & Paws (Kentish House, RAW, Medicare KIDS, Services Australia, NDIS Mission) @ Kentish House</p> <p>10pm – 6.00pm: The Quiet Corner @ Kentish House</p>	<p>8th</p> <p>5.30pm – 7.30pm: Spring Summer BBQ (veg. options available) @ Sheffield Bible Chapel</p> <p>29th</p> <p>11.00am – 12.30pm: Mr Perfect BBQ @ Sheffield Health Park (Bossimis if weather bad)</p> <p>9.00am – 1.30pm: Annual Community Market w. food @ LBCH</p>
--	---

All services & programs are free unless marked with an *
No bookings required unless marked with an ** For more information:

Call, text or leave a voicemail:	Or come visit us at:
<p>Kentish House: 6491 2322</p> <p>Cassandra: 0447 325 343</p> <p>Ruby: 0497 780 216</p>	<p>Kentish House 16 – 18 Station Street Sheffield</p>

Proudly sponsored by:



The Access to Health Services Project received funding from the Australian Government



The Medicare Mental Health Centre in Devonport is now open:

The Devonport Medicare Mental Health Centre offers a safe and supportive environment where adults aged 18 and over can access **free**, professional mental health support, with no need for a referral or appointment.

10am – 6pm, Monday to Friday
 11-17 Stewart Street, Devonport or call 1800 595 212

COMMENT - SUPERSTITIOUS? NOT ME!

By Geoffrey Curtis

Hands up who says they are not superstitious. Ah, quite a few of you, but this is a myth as we are all superstitious, whether we realise it or not, because it is so woven into our own culture.

When someone sneezes, we often quite unexpectedly say out loud, 'Bless you'. Why? This dates back to early Roman times, but more so from the European Middle Ages, when plagues were rampant. Therefore, to protect oneself from death, saying this prayer might help. On the other hand, it is also said that the expression 'God Bless You' would expel the devil who was trying to reach one's soul.

We may laugh at some of these superstitions, which are simply held beliefs passed from one generation to the next, not based on human reason or scientific fact, but connected to the old ideas of magic and the supernatural.

Some superstitions fade away like 'fainites' (UK) or 'barleese' (mainly WA) when playing the game of 'chasey' by young children and asking for a truce. In that way, you can't be 'killed off'. Do you walk under the ladder pressed against a wall or skirt around it? Maybe you have never heard of these fallacies.

We won't mention Santa Claus just in case the children are listening, but we can say something about a birthday cake, especially if you have youngsters. This custom originally goes back to the Ancient Greeks; however, traditionally, it was from the medieval period when it was believed that lit candles had the magical power of life.

Why do we say, 'Close your eyes and make a wish'? So long as the candles are blown out in a single puff, the wish would remain a secret; otherwise, it may not come to fruition. Do you continue this timely held belief in your family?

The are so many forms of superstitions, it is a wonder we don't

recognise some of them until some event, accident, or change comes about. For instance, if you inadvertently spill salt at meal time, you are supposed to take a pinch of salt in your right hand and throw it over your left shoulder, or if left-handed, the right shoulder. A few things my father taught me were not to put shoes or keys on a table and never cross knife blades together. In any form, they may well bring less good fortune, yet if you research their origins, they do begin to make some sense.

Many of our superstitions have a religious connotation, which is hardly surprising, for it once may have been for health, moral, or other reasons. So why have fish only on a Friday? There are several reasons, including Christians to abstain from red meat for dietary reasons, to economic intentions, so that money could be made at fisher ports often controlled by the Catholics, to the symbolism of Jesus (a fisherman) crucified on a Friday.

A once-common belief was that if you do 'Good works' here on Earth, then you will be able to enter the kingdom of Heaven. Much would depend, of course what your good intentions were. For example, if you made a lot of money being an exploitative businessman, you may not go to Heaven. However, being a kindly benefactor to the church throughout one's life would deem it possible. So, what did the poor do? Pray a lot in the hope of being allowed entry?

Things get a little blurred as to whether some religious rituals became secularized, disappeared, or changed course, such as getting married. If the bride does not wear white, then this will bring bad luck. The bride must be carried across the house threshold by the groom to bring fortune (Fortune was a Roman goddess of luck). One that seems to have faded is giving money (cash) to the wedding couple, avoiding numbers with four written on them. Credit cards and personal bank transfers have seen off most of the difficulties here!

Diverse groups have their own superstitious identities, sports in particular. Some fans will swear their team lost a game because the individual was not wearing the team's clothing or an emblem. Players will wear certain socks or carry a lucky charm.

Gambling is another where the player knows their losing streak will turn to their advantage after having crossed two fingers on each hand and not choosing number 13! And so, the list goes on, from black cats to not walking on pavement cracks to seeing a horseshoe upside down. Whatever they are, superstitions are part of the fabric of anyone's life, whether they realise it or not, no matter which country they live in or how old they may be. What's your favourite held belief?

*Geoffrey Curtis is a social commentator and historian.
geoffwcurtis@hotmail.com*

RAILTON RSL
14TH NOV

AARON CATLIN
7 - 10PM
\$10 PP



BAHÁ'I FAITH

“O ye beloved of the Lord! In this sacred Dispensation, conflict and contention are in no wise permitted. Every aggressor deprives himself of God's grace.” - Baha'i Writings

www.bahai.org

0448976442

Wedding gowns showcase bridal history

The Lower Barrington Community Hall welcomed a steady stream of visitors on Saturday, October 11, for a delightful display of wedding gowns and accessories shared by local residents.

The collection showcased beautiful pieces spanning from 1913 through to 2011, offering a glimpse into bridal fashion through the decades.

The Hall was elegantly decorated by organiser Sue Dooley and her dedicated team of helpers, creating the perfect setting for the occasion.

Guests enjoyed refreshments served at a charming bridal table, complete with traditional trimmings, while outside, a vintage bridal car added to the nostalgic atmosphere.

We extend our heartfelt thanks to all the families who generously loaned their treasured gowns, photographs, and accessories, and to everyone who attended and helped make this event such a success.

Next outing to Bells Pde

The first adventure of the Healthy Outings Program, run by Kentish House and proudly funded by the Access 2 Health Services Regional Project for Kentish, was a joyful and engaging day out for local community members.

The group boarded the bus and headed to The Hive in Ulverstone, where they explored vibrant art and history displays, got hands-on with interactive creative exhibits, and even built and raced mini race cars!

Laughter filled the afternoon as participants enjoyed a delicious lunch and a cuppa at the café, soaking up the positive energy and connection.

The Healthy Outings pilot program is designed to support positive mental health and wellbeing by giving Kentish residents the chance to visit new and interesting places, connect with others, and simply enjoy a day out.



The next outing is a picnic at Bells Parade in Latrobe on Monday, **November 17**, with a yummy lunch, walk around Pig Island and lots of laughs to be had! Spots are limited, so booking is essential. Contact Cassandra or Ruby on 6491 2322 or 0447 325 343 to secure your place.

MG Car Club brings class to Sheffield

The MG Car Club of Tasmania is holding its annual concours in Sheffield on **November 15**, with cars from the 1940s to current models on display from 10am in Health Park, adjacent to Mural Park.

Some cars are entered for judging, while some members prefer just to display their cars.

Members of the public are welcome to view the cars, chat to the members, and place a vote for People's Choice trophy, donated by Shannons Insurance.

Each class winner will be entered into final judging for the overall winner, with certificates and trophies to be presented at the dinner that evening.



Smelling roses gives our mental health a boost

The theme for the Mental Health Council of Tasmania's 2025 Mental Health Week was "Appreciate the Little Things", with a simple but powerful aim: to reflect on the things that bring us happiness and to remember to appreciate the small joys.

Often, it's the seemingly unimportant, minuscule things we overlook that can remind us to smile.

Taking the time to notice these things has a knock-on effect - it helps us be present in the moment and can give our mental health a gentle boost.

When we stop and smell the roses, we press a temporary pause on stress, worry, or exhaustion, and shift our focus to the pleasantries in front of us.

A wide variety of exhibits were on display at the Kentish House Community Taco Meal Mental Health Week Event - from paintings created during craft activity days to photography, LEGO creations, a plant terrarium, and a variety of drawings.

Each piece reflected the creativity and spirit of our community.

Despite the wild, windy weather, we had a fantastic turnout!

A heartfelt thank you to everyone in the community who made this event possible — whether by submitting artwork, attending the event, or volunteering to help get everything ready.

Your contributions helped create a beautiful day of connection, creativity, and appreciation.

We would also like to thank the following funding bodies: the Access 2 Health Services Regional Project for Kentish, Kentish House, and Mental Health Council of Tasmania.

- **Written by Jane (volunteer) & Ruby (A2HS)**

Healthy Habits with

Jon Delaine
Care Coordinator
Rural Health Tasmania



Wild winds and wet weather have heralded the arrival of Spring in Kentish. Our communities have faced a number of weather-related challenges, including power outages, damaging winds and the recent weather-related tragedies that claimed both local and visiting tourist lives in Kentish and at Cradle Mountain.

These tragic events impact our community, and it is important to know that local supports and care services are available for anyone across Kentish feeling the impact of these events.

Confidential free counselling and mental health supports are available from your local Rural Health Tasmania team in Sheffield, as well as the new Devonport Medicare Mental Health Centre 1800 595 212.

Staffed by a multidisciplinary team, including mental health clinicians and peer workers, care is tailored to the needs of each person with wraparound support for people with more ongoing needs - without costs, without a referral.

The month of November has a focus on mental health awareness for many, with the annual Movember campaigns raising awareness on men's suicide prevention and prostate and testicular cancers.

International Men's Day is also celebrated on November 19 around the globe, focussing on men's health and wellbeing.

Everyone is encouraged to engage in a positive discussion about health and wellbeing across November - including words of encouragement for those people trying to tame and train their facial hair for Movember.

Not sure how to start a conversation about health and wellbeing with a mate? It's always best to start with an open, honest conversation. This can be tricky if it isn't something you regularly do, and it's fair enough if you're worried about it being awkward, or even making it worse by bringing it up.

Raising concerns in a genuine and caring way can provide relief to your mate who may have needed someone to notice. Beyond that, it may be good to encourage them to get in touch with a local healthcare professional for ongoing support.

Checking in with mates is a great way to maintain healthy connections. Heading out for a walk, a coffee, fishing or even flicking a text message works well in maintaining connection.

Bottom line is it doesn't matter how you reach out, letting your friends know you're there is what matters the most.

Learning about dementia

In September, Kentish House and the Tasmanian Health Service hosted a valuable information session with Allison from Dementia Australia, bringing community members together to learn more about dementia - what it is, how it affects individuals and families, and how we can all play a role in supporting those impacted.

Allison shared practical insights and answered questions in a warm, welcoming environment. Attendees enjoyed snacks and a cuppa while connecting with others and accessing resources.

Did you know?

- About 433,000 Australians are living with dementia;
- Over 1.7 million people are involved in their care;
- Up to 45% of dementia diagnoses could be prevented.

Whether you're living with dementia, caring for someone, seeking information or training, supporting the cause, or contributing to research, Dementia Australia is here to help.

Visit www.dementia.org.au to: take a checklist if you've noticed changes or early signs; make a personal referral if you're concerned about yourself or someone close to you; learn how to reduce your own dementia risk

Access free, confidential expert advice and support, 24/7 via 1800 100 500 or live chat with an Advisor. Or reach out to Rural Health Kentish or Kentish House for support and referrals.

NORTH WEST FILM SOCIETY

October / November 2025

North West Film Society screens at
Reading Cinemas Best St Devonport

Preview all films at: www.nwfs.org.au/upcoming-films



15th October @ 7pm
The Ballad of Wallis Island
PG | 99 mins | 2025 | UK | Comedy, Romance

A fresh big-hearted comedy about an eccentric lottery winner, who lives on a remote island and dreams of getting his favourite musicians back together. As the musicians rehearse, old tensions resurface and sparks fly, while their relentlessly positive host tries to keep the peace.



12th November @ 7pm
Mr. Burton
M | 124 mins | 2025 | UK | Biography, Drama

The extraordinary true story of a working-class boy destined for greatness (actor Richard Burton) and the teacher who got him there.

Annual or Part Memberships available
For more details visit the NWFS website - www.nwfs.org.au
Our membership recruitment desk operates between
6:30 pm and 7:00 pm at every screening. Find us on Facebook - [nwfilmsociety](https://www.facebook.com/nwfilmsociety)

Cuppa & Kids

For parents of young children to come together over a coffee and chat. Visiting services to attend, providing information & support.




Fridays at 10 am

Limestone Cafe Bakery
16 Foster Street, Railton Tasmania 7305




Wilmot saves Andrew's job from the tip

By Jo Ross

Well folks, it's official - our Tip Bloke's job is safe.

After so much action and happenings with letters, signatures, yarns, and passionate chats down at the Tip (and let's be honest, a few over a beer or two), the Powers That Be have listened. The decision's been made, the paperwork's been stamped, and the bloke with the hi-vis and the big heart is still at his post - Andrew Cooper (*right*) will be keeping the gates open, the piles sorted, and the conversations flowing.

In an age when good news seems in short supply, this one's worth celebrating. Because this wasn't just about a job - it was about community. About showing that when we speak up together, with fairness, humour, and heart, the message gets through. So, a few words of gratitude are in order...

To Kentish Council

Thanks for taking the time to listen and reconsider. It's not always easy to change course, but you did - and that deserves recognition. Your choice to reinstate the position showed that local knowledge and loyalty still matter. You didn't just keep a man in a job; you kept a town connected. Here's to good governance, done with heart. And for proving that sometimes, bureaucracy can get it right.

To the Wilmot Community

You absolute legends. Every signature, every letter, every conversation mattered. Together we reminded everyone what makes this town tick - a shared sense of decency, humour, and belonging. And look what we did! We saved a job, a mate, and a vital part of our community fabric. That's something to be proud of. So go on, give yourselves a pat on the back next time you're down at the Tip. And don't forget to wave at the bloke behind the barrier — he's still there, still grinning, and still ready for a yarn.

Ultimately, the town of Wilmot is all the better for it.

Thanks to everyone who backed the cause, spoke up, or cheered from the sidelines. The Tip Bloke stays - as does the spirit of this mighty little community.



Vinnies needs extra hands for support

The St Vincent de Paul Society launched a statewide campaign during Revitalisation Month in September, to welcome new members into its Conferences, with a renewed focus on recruitment, renewal and retention.

Revitalisation Month is time for Conferences across Tasmania to reflect on their Vincentian vocation, celebrate their works of service and encourage others to consider joining their mission.

The campaign highlights the diversity of Vincentian works across the state through advocacy, youth programs and assisting Tasmanians in need through emergency relief hubs.

The theme 'The hands behind the help' has been spread through parish bulletins, community radio, posters and social media.

State President Corey McGrath said under the theme The Hands Behind the Help, the campaign presents an exciting opportunity for new faces and fresh energy to help the Society meet growing community need.

"Our members are the hands behind the help, the people who visit homes, offer emergency relief and provide comfort to those experiencing hardship," he said.

"We are inviting people who feel called to walk alongside others in faith and compassion to consider joining their local Conference.

"The Society is encouraging a diverse mix of people to step forward and benevolently give up their time in support of the Society's 'Good Works'.

"We welcome anyone able to contribute a few hours each fortnight, either individually or with a friend."

Mr McGrath said The Society was committed to ensuring new members felt supported and valued, with strong induction, mentoring and opportunities for spiritual and personal growth.

"We endeavour to help new members find their place, nurture their passions and ensure they stay with us for the long journey," he said.

"We are eternally grateful for all the outstanding projects our members contribute toward day in, day out, but there is always room for new recruits to lend a hand."

Mr McGrath said membership was central to the Society's future. "By joining us, members can not only make a difference in their community but also find deep personal connection and purpose. "We warmly welcome anyone who feels drawn to our mission to get in touch."

For more information on how to become a member visit vinnies.org.au or visit your local parish Conference.

CAN YOU SPARE A FEW

HOURS A FORTNIGHT?

As more Tasmanians battle the cost of living crisis, Members of the St Vincent de Paul Society become the hands behind the help in our local community.

If you feel that you could help in some small way, contact us at volunteer@vinniestas.org.au



St Vincent de Paul Society
TASMANIA

good works



Walters
CONTRACTING
EARTHMOVING & QUARRYING
LANDSCAPING AND GRAVEL SUPPLIES

Nook Quarry - Gravel Pit Road, Nook
Landscape Supplies Yard - 6192 Frankford Road, East Devonport
Main Office - 11 East Goderich Street, Deloraine

.....

- SUPPLY & DELIVERY OF GRAVEL, AGLIME & LANDSCAPE SUPPLIES.
- ROAD, SUBDIVISION & DRIVEWAY CONSTRUCTION
- GRADER, ROLLER, EXCAVATOR, MOBILE CRUSHING & BULLDOZER HIRE
- TRUCK, TRUCK & TRAILER, WATER CART, HEAVY HAULAGE
- CIVIL CONSTRUCTION, EARTHWORKS, EXCAVATION, DAM BUILDING

Main Office - (03) 6362 3782
Sales, Pricing & Deliveries - 0400 333 275
<https://www.walterscontracting.net>
'Making The Grade'



Bakes Sawmill Pty. Ltd.
ABN 78 092 865
1369 Claude Road, Sheffield Tasmania 7306
Telephone: (03) 6491 1699,
Mob.: 0407 911 692 + Fax: 03 6491 1971
E-mail: bakes101@aapt.net.au

For ALL your TIMBER NEEDS !
DRY FRAMING, WEATHERBOARDS
GREEN TIMBER CUT TO ORDER
RAILS, PALINGS, GARDEN SLEEPERS
WOOD CHIPS, GARDEN STAKES (pointed)
OREGON BEAMS, STUDS & PLATES
SAWDUST & MILLWOOD FIREWOOD
DELIVERY AVAILABLE

PADDYWORKS

Excavation and Earthmoving
20 tonne excavator - 7.5 tonne excavator
with 5 buckets, auger and rock breaker
2.5 tonne excavator - 10 yard tipper
Tim Padman 0439369455 / 64911181

KNIGHT EARTHMOVING TAS
BOBCAT, EXCAVATOR & TRUCK HIRE

**3½ Tonne Excavator with rubber tracks
and 300 or 450 diameter augers.**

*"Family owned business servicing the Kentish area for
over 30 years, experience that will assure a job well done."*

Specialising in driveway preparations, slab preparations
and footings, drains and all other earthmoving needs.

Call MATTHEW now on 0418 320 593 or A/H 6491 2308

GTM
CARPENTRY

- Pergolas
- Decks
- Bathroom Reno's
- General Carpentry

**Local to Sheffield,
30yrs experience.**
Call Glenn on
0403 360 584

DM SLASHING

DUNCAN MANTJE
MOBILE: 0497761304

SERVICING THE
NORTH & NORTH WEST COAST OF TASMANIA
EMAIL : DMCLEARING@MAIL.COM



**LAWN & GARDEN
MAINTENANCE**
SLASHING / WEED CONTROL
RUBBISH REMOVAL & MORE
FREE NO OBLIGATION QUOTE
13 26 13
www.viphomeservices.com.au

LETTER TO THE EDITOR

Dear Editor,

I rely on your good graces to publish this letter, as I have been denied direct access to Councillors or attendance at Council meetings for one year. This 'order' was given by the General Manager. This outcome, I believe, is the result of my passionate interest in possible contamination of the mRNA Covid-19 vaccines. I make no apology for my passion.

Information came to light from various sources that there were questions needing to be asked on a Federal level about these contamination levels and possible health consequences.

At the Kentish AGM (25 March 2025) I put forward a 'Residents Motion on Notice' that raised a public advocacy issue with potential health implications. This Residents Motion was passed, decisively, for submission to Council to consider at Ordinary Council Meeting April 15, 2025 where the motion was outvoted by Councillors, primarily on the basis that the issue was not within the scope of Kentish Council.

What drove me down this track was a belief that documents

put forward at the AGM warranted being put before ratepayers. This would have been in accord with Council's responsibility under the Local Govt Act 1993 to ensure the community's health, safety and welfare. It would also have met Council's obligations under the Public Health Act 1997 to "develop and implement strategies to promote and improve public health". Here, clearly, to my mind, was a public health issue being ignored at the local level by default to federal Agencies.

Further, on 3 June 2025, the Federal Health Dept actioned a precautionary health directive for infants, children and adolescents under 18, withdrawing recommendation that they receive Covid-19 vaccines. Benefits of vaccination are "not considered to outweigh the potential harms". Use of the words 'precautionary' and 'potential harm' supports the intention of our motion put forward at the AGM.

Has Council taken action on this precautionary health directive and advised the Kentish Community of this major change?

Robin Thomas, Paradise

TRADES AND SERVICES



THE LOCAL

MEAT CO

on Claude Road

Bookings

Call now to book lambs, cattle or pigs
in for processing & packing

Hiring

Jobs are listed on our website.
Call or send us a message

Livestock carting

Available for general stock carting
and pickup for processing too

Contact

0491 005 875

www.thelocalmeatco.com.au



**Food Safe
Licensed facility**

SKB PROPERTY MAINTENANCE

ABN 41 815 77 834

Kentish Local 30 yrs Experience

- General Maintenance
- Handy Man Jobs
- Fully Mobile
- Pressure Washing
- Rubbish Removal
- Weeding
- Gardening
- Mowing/Whipper Snipper

Phone: **0447 802 850**

Geordie Painter



Andrew Lambert

mobile 0430 318 258

email geordiepainter@gmail.com

ABN 73 464 976 149

TV HELP!

Bad Reception?
No Signal?



- ✓ Government Approved!
- ✓ No Travel Charge!
- ✓ Guaranteed Results!
- ✓ Pensioner Discounts!

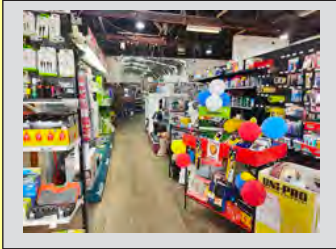
TV Antennas
Vast Satellite TV
Equipment Setup
TV Points

Fully Insured

LIVE WIRE ANTENNAS

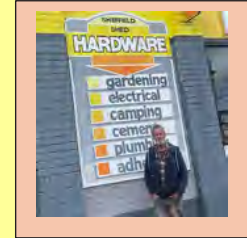
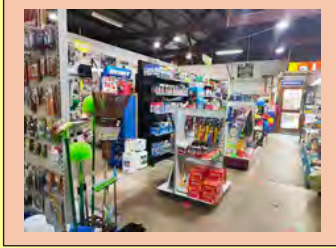
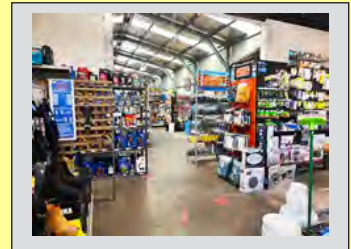
ID 8224

THE SHEFFIELD SHED

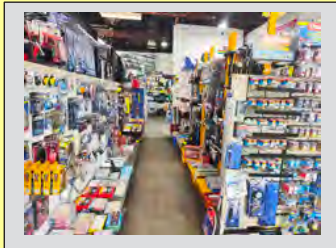


Hardware
Tools
Gardening
Electrical
Cement

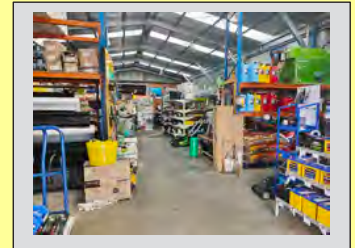
Plumbing
Adhesives
Paint
Camping
Repairs & More



Trevor is your repairman



At your service (left to right)
Chase, Corie, Brynner, Ilsa, Wesley
and Leanne. And Alice our “behind
the scenes wonder woman”



Email: info@sheffieldshed.com

Phone: 6491 1933



Aged Care & Beyond Expo

Sheffield Town Hall

11am-2pm, Thursday 13 November

Hearing Australia Kentish House Care2Serve (Carer's Gateway)

Independent Living Centre Rural Health Kentish Services Australia

RAW Tasmanian Health Service Turnbull's Pharmacy U3A

Birchwood Consultancy (End of Life Care) Council on the Ageing + more!

RSVP is not required, just drop by!



KENTISH CARERS SUPPORT GROUP

- Do you provide care and support for a loved one, family member or friend?
- Do you volunteer your time to provide help to someone in the community?
- Are you an 'unpaid carer' providing care and support?



2-3PM, WEDNESDAY 12 NOVEMBER

INFO., SUPPORT & REFERRALS
+ COME FOR A CUPPA!

AT THIS SESSION:



SERVICES AUSTRALIA / MEDICARE

Rural Health (Kentish Health Centre)
1B Henry Street, Sheffield





Eric Raye Howe
February 16, 1933 –
September 17, 2025

The life of a remarkable man is impossible to sum up in a few words, but we can glimpse Eric's journey through the moments that shaped him - a life lived with passion and purpose.

Eric Raye Howe was born in Deloraine to Ralph and Stella Howe. He belonged to a generation defined by resilience and self-sufficiency - qualities that came to define

him. Growing up during the Great Depression and World War II, he learned early the value of hard work and perseverance.

He shared a close bond with his father, Ralph. At just two, his adventurous spirit showed when he used an upturned bucket to open the mill gate and set off to find his dad. When his little blond head was seen among the machinery, the mill was shut down to keep him safe - an early sign of the determined man he would become.

Eric and his sister Lorraine walked each day to Mole Creek District School, their mother sewing all their clothes with love. On the way home, he'd listen for his father's whistle and ride to meet him - the start of a lifelong fascination with steam. He later earned his mechanical qualifications at night school, showing his dedication and discipline.

At 14, Eric left school to work for the Humphry Brothers, who quickly recognised his natural mechanical ability. He was also a keen footballer, and when called up for national service during the Korean conflict, a football injury and dye poisoning led to an honourable discharge - a twist of fate that kept him home.

Eric's love of engines only grew. He proudly drove the Sentinel wagon, the first vehicle to cross the Devonport Bridge, and became known for restoring and building machinery from scratch. His skill earned him respect internationally.

He was a founding member of the Redwater Creek Steam and Heritage Society and SteamFest in Sheffield, alongside his good friend Peter Martin. In 1993, he and Coral joined the Allums and Martins to establish the Sheffield Steam and Heritage Centre. Later that year, Eric suggested holding the first SteamFest to raise funds for site development. He transported most of the steam equipment for that first event and for many years after. He also helped build the first section of track, and just two months later, the first SteamFest came to life.

Many of the engines at Redwater Creek today were restored by Eric or bear his influence. He was one of Australia's most prolific engine restorers, and the steam community will long remember his contribution. His family shared his passion - his grandchildren dozing on top of the wood while he worked.

Eric was a devoted father to Lindsay, Stephen, Bevan, Glenda and Leeanne. When he married Coral, he lovingly welcomed her children - David, Peter and Tammie - as his own. Together they created a big, happy family that grew to 27 grandchildren and 45 great-grandchildren. Family was his greatest pride and joy.

Aged 92, Eric passed away peacefully. His legacy lives on through his family, friends, and the machines he so lovingly restored.

- Jill Ridgway

Clifford Roland Treloar
October 1, 1926 - October 4, 2025

Clifford Roland Treloar passed away peacefully at home on Saturday, October 4, at the remarkable age of 99.

Affectionately known as "The Coach", Cliff was an inspiration to many.

Originally from Beulah, this is where Cliff commenced farming and raising a family at a young age. In the 1960s, Cliff moved to Claude Road where he cleared his Paradise property from a bush block to pasture and he began dairy and beef farming.

He also spent time assisting others in the area with contract farm work, harvesting and bailing. During this time, Cliff served as the local BP Petroleum agent, supplying fuel to the community from his Paradise property.

Following this, in the 1970s, Cliff established Treloar Transport (now Treloar Civil & Quarries) with just a couple of trucks, carting logs from local forests.

After a few years, Treloar Transport transitioned from log cartage to transporting and processing gravel, a move that laid the foundation for the company's continued growth and success.

Cliff was a highly respected leader of the Treloar team and a well-known, valued member of the Kentish community. He will be remembered for his unwavering work ethic, pioneering spirit, and lifelong dedication to his family, his business, his farms and his community. 'The Coach' will be deeply missed. RIP.



Paws & Grub

At Claude Rd & Lower Barrington Hall

Hey there, Farmers!

We're throwing a laid-back grub and catch-up, just for you local farmers - and yes, your pets are invited too! 🐾🐾

When: 25th November, Time: 11 am-12 pm, Where: Claude Rd Hall

When: 27th November, Time: 9.30 am-10.30 am, Where: Lower Barrington Hall

Bring yourself, your furry (or feathered!) mate, and enjoy some food, a few laughs, and great company.

It's a little thank you for all the hard work you do.
Hope to see you there!

- The Team at Kentish House & RAW






The ADPS project received funding from the Australian Government

Easy-care Rhodos thrive in perfect soils

Gardening with Robert Gower

Dwarf Rhododendrons, or more commonly, rock Rhododendrons, are particularly well suited for Tasmanian conditions, with our acid soils.

The soil pH needs to be between 5 and 6.

In our cool environment they thrive and come in a beautiful range of colors: reds, pinks, whites, lavenders and even yellow. I particularly like the lavenders and yellows.

With the ones I care for, the only pruning I do each year is remove the dead blooms. I feed them an organic fertiliser straight after they have finished flowering. I find with our rich soils in Kentish, this is all they require.

Dwarf Rhododendrons prefer dappled shade but can take full sun, provided they have protection from afternoon sun and strong winds. These will cause the plant to be stressed. The soil needs to be moist but well drained.

When planting in the ground, I like to dig the hole twice as wide as the plant, but no deeper than the root ball as they are shallow rooting plants. I then top dress with some rich organic compost.

If you are going to plant in a pot, mix about a quarter of organic compost to the potting mix.

When it comes to pests and diseases, for the best part they are pretty hardy, if they are not under stress. Some of the more common pests/diseases are: petal blight, aphids, two spotted mite and scale. These can easily be controlled with products like Eco oil, and fungicides like Mancozeb.

These plants are an excellent addition to your garden and add a wonderful range of colors, don't take up much room and with

compact growth, need very little care. This is a good time to buy some, as you can choose the colors you like.

Happy Gardening!



CALD SOCIAL GROUP

4.30 PM - 6 PM
3RD MONDAY OF THE MONTH
16 - 18 STATION STREET, SHEFFIELD

cultural and language diverse community members are invited to attend a monthly social group

欢迎来自不同文化和语言背景的社区成员参加我们的每月社交聚会

CHÚNG TÔI TRÂN TRỌNG MỜI CÁC THÀNH VIÊN CỘNG ĐỒNG ĐẾN TỪ NHIỀU NÊN VĂN HÓA VÀ NGÔN NGỮ KHÁC NHAU THAM GIA NHÓM GIAO LƯU HÀNG THÁNG

さまざまな文化や言語的背景を持つ地域の皆さまを対象に、月に一度の交流会へのご参加をお待ちしています

विविध भाषा र संस्कृतिका समुदायका सदस्यहरूलाई मासिक सामाजिक समूहमा सहभागी हुन आमन्त्रण गरिन्छ।





Railton RSL

THE TRUE STORY OF THE S.A.S. IN AFGHANISTAN

22nd November

7.30pm

\$25 per ticket

RSVP
15th Nov
64961 324

BRAVERY AND BETRAYAL

Bookings required

FINALIST
San Diego
International Film
Festival
2025

FINALIST
East Village New
York Film Festival
2025

OFFICIAL SELECTION
Sydney Lift-Off
Film Festival
2025

meals available from 5pm

Market Moves

with **Corinne Nicholson**
Principal
Roberts Nicholson



It's easy to see why people are falling in love with our wonderful Kentish community! Between the friendly locals, stunning scenery, and the creativity that fills our towns - especially with Mural Fest just around the corner - there's a real buzz in the air. I've been chatting to many local buyers from across Tasmania as well as Queensland and Western Australia who are eager to make Kentish their new home.

Our lifestyle, space, and sense of community are what people are craving and they can't get enough of it. In fact, I've sold most of my current listings, particularly residential homes, which are proving incredibly popular.

If you've been thinking of selling, now is the perfect time to capture this buoyant market. Buyers are actively looking, and quality homes are moving quickly in Sheffield and Railton.

Seller Tip: Highlight your property's lifestyle appeal with veggie gardens, outdoor entertaining areas, and sunny spaces where people can picture enjoying summer evenings are a big drawcard right now.

Buyer Tip: Stamp Duty is paid in addition to your purchase price. Eg. if buying a \$500,000 property in Tasmania, expect to pay around \$24,000 in stamp duty, legal, and transfer costs. It's wise to factor this into your budget early.

Property of the Month – 138 Marshall Road, Nook

Prestige List Price : Contact Corinne

Set on 9 acres with sweeping rural views offers prestige country living close to Sheffield and Devonport. This elegant home features 4 bedrooms, office, 2 bathrooms, 2 large living areas, 2 wood fires, single garage, shed & workshop plus a caravan carport. This is a rare opportunity to enjoy comfort, space and style in a sought-after Kentish setting.

Whether you're curious about your home's value or simply wondering what's next, I'm always happy to chat. View my current listings at www.rrenicholson.au



Fun for young and old as generations meet

Seven Sheffield School primary students and seven Tandara residents have been paired up and wrote letters to each other as part of the Guided Inter-Generational Learning Support program.

The penpals met up recently and spent time playing board games and reading.

The contact benefits both age groups.



Advertisement

Mark Shelton MP

Liberal Member for LYONS



Working to
strengthen regional
communities

Tasmanian
Liberals



(03) 6324 2080

f MarkSheltonMP

@mark.shelton@parliament.tas.gov.au

10A Marlborough Street, LONGFORD 7301

Authorised by Mark Shelton MP, 10A Marlborough Street, LONGFORD 7301

CASEY HISCUTT

INDEPENDENT
MEMBER FOR
MONTGOMERY

Proudly supporting your local community.

Phone: 6425 8300

Email: casey.hiscutt@parliament.tas.gov.au

Office Hours: 9am-4:30pm | Monday, Tuesday, Thursday, Friday
You'll find my office at 36 King Edward Street, Ulverstone



ADVERTISEMENT

Brian Mitchell

Labor Member for Lyons



I'm here to help! Please get in touch
by emailing me at

Brian.Mitchell
@parliament.tas.gov.au

Authorised by Brian Mitchell MP (ALP, Hobart) 33 Cole Street Sorell TAS 7172

Alan Dyer's Books
are now available as
e-books online at
www.alandyerbooks.com

ADVERTISEMENT

Guy Barnett

Liberal Member for Lyons



Tasmanian
Liberals

📍 76 Emy Bay Rd, Deloraine TAS 7304 ☎ 6701 2170

📧 GuyBarnettMP 📧 guy.barnett@dpac.tas.gov.au

Authorised by G Barnett, 76 Emu Bay Rd, Deloraine TAS 7304

ADVERTISEMENT

Jane Howlett

Liberal Member for Lyons

*Working hard for you
every day*



Tasmanian
Liberals

☎ 6165 9415 📍 32 Cole St, Sorell

📧 Jane.Howlett@dpac.tas.gov.au

Authorised by J. Howlett, 32 Cole St, Sorell TAS 7172

Farmers support rural mental health

Members of the Agricultural Contractors of Tasmania presented RAW team member Kerry Connors with a \$2000 donation in September.

State Chairman Peter Campbell from Sunnyside said the Ag Contractors had presented this amount to RAW for the past three years, recognising the legacy of RW (Bert) Campbell, a founding member of the Association. Bert was keen to promote agriculture as a worthwhile and very rewarding career pathway.

Since 2023 the members of the Ag Contractors have recognised the valuable work RAW does in Tasmania's rural community which has resulted in this donation.

They retain a close working relationship with Rural Alive and Well, with members recognising that these donations help "build healthy and resilient, rural and remote communities".

"The Association is well represented in the Kentish region, with members offering a variety of agricultural services," Peter said.

"A yearly handbook is a key resource produced by the Association. It lists members of each region, Mersey Valley, Northern and Southern members, their contact details on the services they provide."

Peter said new members are always welcome.

The Agricultural Contractors of Tasmania, which celebrated



Peter Campbell, Peter Cables and Jordan Perkins from the Agricultural Contractors of Tasmania with Kerry Connors from Rural Alive and Well. Photo: Tony French

50 years of service in 2023, recognises the valuable work Rural Alive and Well does in the State.

Rural Alive and Well (RAW) is a Tasmanian not-for-profit organisation dedicated to improving mental health and well-being in rural communities through proactive support and suicide prevention programs.

Got the heart attack blues? You're not alone

People in Australia living with heart disease, including a history of heart attack, are being encouraged to recognise the 'cardiac blues' and seek help early.

With more than four million people in Australia living with a cardiac condition and one person every nine minutes hospitalised due to heart attack, the Heart Foundation is highlighting the intersect between mental health and heart health.

Around 75 per cent of people who have had a heart event experience the 'cardiac blues', with symptoms including:

- Loss of interest in activities and withdrawal from others.
- Becoming tearful and crying easily.
- Sleep problems or change in appetite.
- Confusion or forgetfulness or an inability to concentrate.
- Worry about a recurring heart event.

The Heart Foundation's Natalie Raffoul said the 'cardiac blues' was a common response to a life-changing event such as a heart attack or being diagnosed with heart disease.

"The emotional impact is often underestimated," she said.

"Feelings of anxiety, fear and sadness are normal, and it's important to keep in mind that the feeling of the 'cardiac blues' can resolve with time and support."

Natalie recommended staying connected to family and friends, keeping active, and joining a cardiac rehabilitation program or peer support group.

"For some people however, symptoms can linger. Almost half of people still experience symptoms of depression or anxiety six months after leaving hospital after a heart attack."

The Heart Foundation offers a free 12-week tailored support program called MyHeart MyLife. Visit www.myheartmylife.org.au or <https://www.facebook.com/groups/myheartmylifecommunity/>

Justice of the Peace

A registered JP attends Kentish House every fortnight between 9:30 a.m. and 11 a.m.

You don't need to make an appointment.

Upcoming dates
13th October
27th October
10th November * 9-10:30 am
24th November
8th December
22nd December

*Other dates/times can be arranged as needed.

Local earthmoving and excavation
 Acreage mowing up to 5 acres
 Block clearing
 Driveways
 Dams
 Fence line clearing
 Machine and vehicle transportation
 No job to big or small
 References available
 Honest reliable service
 Ring Dave
 0428 963 236



Sheffield Vet Clinic
 36 Main St, Sheffield
 Phone: 6491 1556

Monday—Friday	8:30am - 5:00pm
Saturday	9:00am - 12:00pm
24 Hour Emergencies <small>(Call only, no text, after-hours fees apply)</small>	0499 744 533

Review for freight scheme

The Australian Government will appoint an independent person to undertake a comprehensive review of the Tasmanian Freight Equalisation Scheme. The Review will consider if the scheme could better support Tasmanian businesses to compete in other markets, recognising that, unlike their mainland counterparts, Tasmanian businesses do not have the option of transporting goods interstate by road or rail. The Review will also consider the role of the Bass Strait Passenger Vehicle Equalisation Scheme in reducing the cost of passenger vehicles.



ABN: 35 601 663 441
 C/L 1386226

2 Douglas Street / PO Box 105E, East Devonport TAS 7310
 Phone: 03 6427 8781 • Fax: 03 6427 8771 • Mobile: 0418 140 104
 Email: admin@briggspumbing.net.au



KMS TREE SERVICES

- Certified Arborist
- Tree Removals
- Wood Chipping
- Corrective & Safety Pruning
- Hazardous Tree Assessment
- Mulch Deliveries

Mathew Stephenson
 0408 642 728

kmstreeservices@gmail.com
 www.kmstreeservices.com

www.d-signs.com.au



TRELOAR
 MAINTENANCE & ENGINEERING

LOGBOOK SERVICING
 BRAKES & SUSPENSION
 REPAIRS & MAINTENANCE
 AUTO ELECTRICS
 AIR CONDITIONING

TYRE & WHEEL FITTING
 CARS & 4x4
 TRUCKS
 WHEEL BALANCING
 WHEEL ALIGNMENT

"KNOWLEDGEABLE & FRIENDLY TEAM WITH OVER 30 YEARS INDUSTRY EXPERIENCE"

3/36 CLAUDE ROAD, SHEFFIELD – (03) 6491 1686

Back hunters to tackle deer numbers

MP Carlo Di Falco, like many other responsible hunters, looked forward to the latest fallow deer population data and urged the Tasmanian Government to adopt stronger measures led by responsible hunters rather than poisons or mass aerial culls.

Population growth: 71,655 deer in 2024, up from 53,660 in 2019 continuing an upward trend.

The report recommends 2–3 yearly aerial surveys and annual wilderness edge checks, with drones, thermal imaging and citizen sightings to catch new incursions early.

“This report proves deer are spreading and numbers are climbing. But it also shows they are still below some of the headline estimates quoted by the Invasive Species Council (100,000) and Tas Farmers (150,000).

There is an increased area of population of deer because there is increased areas converted to farming.

I queried the population growth with officials and was told that recreational hunters take on average (in recent years) more than 20,000 deer annually and crop protection permit holders cull estimates are higher (the latest returns 40,000). An adult deer will bone out to 25-30kg of meat. This equates to 1,000,000kg not utilised. By any metric, that is a fair proportion of the population every year and much wasted meat.

Based on these figures, there is no justification to change their classification from partly protected to feral. The advantage of allowing hunters to harvest the meat (as opposed to culling) means the animal is used to feed families and, if we amend

the meat hygiene act this will allow for the donation of much-needed protein through charity partners to underprivileged communities.

Wallabies are not included in these reports which are clearly the biggest concern our landowners face. The numbers are rapidly growing, and we need to address this with investigation of the effectiveness of suppressors to control the population. We need to give the hunters all the tools to effectively control burgeoning populations of browsing animals.

I strongly encourage the government to;

- Recognise that responsible hunting is a more humane, targeted and effective control than toxic baits which leads to dire impact on non-target native species.
- Support recreational harvest over aerial culling.
- Expand seasonal hunting access to reduce waste.
- Enable trained hunters to use thermal scopes and sound suppressors in World Heritage sites to quietly and effectively remove deer without disturbing wildlife.
- Improve access to sustainable timber production forests and adjoining World Heritage sites.
- Review the Meat Hygiene Act to allow hunters to donate harvested meat to charitable organisations.

“Tasmanian farmers see first-hand the damage deer cause. Giving them and responsible hunters more tools and access is crucial to protecting crops and native habitats,” Mr Di Falco said.

SHEFFIELD HOTEL
TASMANIA



Every Sunday

JAG THE JOKER

Happy Hour from 3 - 6pm

Drawn at 6pm

*Terms & conditions apply

SHEFFIELD HOTEL
TASMANIA

@sheffieldhotel

ROLAND VIEW BISTRO

Open

7 Days a Week

All day Meals

from 11.30am

Take Away

available



"Sheffield Hotel Tasmania"

Bar & Bottle Shop Open from 10am-10pm, later on weekends

“On Tap” Beers: Hard Rated - St George 3.5 - Ginger Beer - Boags Draught - Guinness - Carlton Dry - Great Northern

All enquiries ph. 6491 1130–Sheffield Hotel, 38 Main Street

Mining up the Five Mile Rise from

Before the huge Hydro dams flooded the Forth River valley in the early 1970s, it consisted of deep gorges and long gullies. So when *Henry Hellyer* was asked to survey his VDL Co track to the NW coast in 1827, the only place he could find to ford the Forth River was at the place we now call Lorinna. At Lorinna there were a few hundred acres of undulating river flats that allowed Hellyer to cross the 40-yard-wide river, then continue his VDL Co track up the 'Five Mile Rise' – a very rugged and steep climb from the Forth River (elevation 650ft) up onto the Middlesex Plains (elevation 2000ft) where *Field Bros* were later granted a massive 10,000-acre cattle run.

For decades, the only way *Field Bros* had to cross this broad river with cattle, carts, horses and stockmen was to wade across a bed of slippery shingle or to swim. In dry seasons, the river was 2–3ft deep, but frequently after rain, the river rose, leaving no option but to camp and wait – sometimes for weeks – until the water level receded. At some point, *Field Bros* stretched a wire cable across the river and anchored it to sturdy trees on either side. From the cable, they suspended a small cage called a 'flying fox'. Travellers climbed into the cage with their swags and pulled ropes attached to pulleys to make the crossing.

This wire crossing was still in use and in a neglected and dangerous state when the Lorinna–Middlesex gold mining boom began about 1887. This boom followed *Wm Aylett's* significant gold discovery at the summit of the Five Mile Rise, which led to the formation of the Great Caledonian Gold Mining Co. Before long, over 100 men were prospecting in the vicinity of the Five Mile Rise, with their number increasing daily. In several places, mines were established and milling plants ordered before proper assessment work had determined the real value of the claims. What many miners had to find out the hard and costly way was that while there were payable minerals lying on the surface, there was very little gold in the hard rock below.

Beginnings of Lorinna

In Sep 1890, *Thomas J Clerke*, Irish-American owner of a large general store in Sheffield, gained the contract for a weekly mail service out to this new mining district, so he built a small store on the western side of the Forth River crossing, stocking general provisions for miners including tents and mining tools. It was run by his brother-in-law *Ed (Ted) Best* and opened two days a week from Thursday night to Saturday morning. Clerke advertised it as his 'Post Office store, Middlesex', not to be confused with the 'Post Office Tree' that opened some years later up on the Cradle Mountain Rd. Because this Forth River crossing was the gateway to Middlesex station, this original settlement on the western bank became known as Middlesex.

Each week, a youth riding his pony arrived Thursday evenings with the mail from Sheffield, and at Saturday lunchtime he left to return to Sheffield with the outgoing mail, aiming to catch the last mailcoach leaving for Latrobe. Once a fortnight, *Thomas Clerke* had *Job Nibbs* drive a bullock dray full of supplies back to his Middlesex shop. It was a two-day journey. In Feb 1891, *Thomas Shepherd* opened a butcher's shop there as well. He didn't take orders but each week delivered a week's supply of fresh meat to each mining site. After living off ham, the miners loved the change.

In 1891, the construction of a substantial wooden bridge across the Forth River, costing £700, began. The successful contractor was *Charles Coleman* of Sheffield, who, at times, had 20 men on the job. Pile driving was done under the supervision of

Government Bridge Inspector *Frank Groome*. This 20-foot-high bridge was 72 yards long with three log pylons supporting four spans made up of long logs. At same time, Government Surveyor Chalmers began laying out a township, covering 300 acres of land on both sides of the River Forth. In May 1891, this new township was given the name 'Lorinna', and 44 blocks were put up for sale. Stone and Wilton considered erecting a miner's hotel, but it never eventuated. The bridge was completed in Sept 1892 when the decking was tarred, and road contractor *Walter Butler* joined the rough Sheffield–Lorinna track to the eastern end of the bridge. What a boon for all travellers, horsemen, carts, drays and wagons and *Field Bros'* cattle drovers.

Clerke's postal contract to Lorinna ended Dec 1909 and was taken over by *Alex Sloane* between 1910 and 1921. The bridge was replaced a couple of times but is now covered by Lake Cethana with the two sides of the Forth River once again completely separated from each other.

'They took three pickle jars of gold specks to Launceston.'

The Campbells' Reward Gold Mining Co 1882–1891

Most mines were on the Middlesex side of the Forth River, but before we go there, we need to look at the only significant mine on its eastern side, discovered by two great prospectors, *Alexander & Malcolm Campbell*, four miles north of Lorinna. Alexander Campbell never married, but in 1880 Malcolm Campbell had married *Margaret Johnson*, daughter of *JG (One Arm Jack) Johnson* of Sheffield. They were the sons of *Angus Campbell*, an engineer at the Mersey sawmill, near Don, who became almost as keen on prospecting as his sons. In May 1882, they took three pickle jars of gold specks to Launceston, then applied for four 10-acre leases in the names of their father Angus, Alexander & Malcolm Campbell and brother-in-law *Wm Clark*, who had married their older sister Mary.

They formed a small company, *Campbells' Gold Mining Co*, in 1883. But their capital was too limited, and after spending £800, they were forced to suspend operations because of rising floodwater covering their leases. Taking advantage of an exceptionally dry season in Aug 1886, Malcolm Campbell returned to his old site and resumed prospecting. Just north of his old workings, he came across a gold lode that appeared to have excellent prospects for profitable mining. In Feb 1889, *Campbells' Reward Gold Mining Co* was formed. Out of 150 shareholders, those from Sheffield and Railton included Elvin Atkinson 40 shares; Joseph Acklin 40; Louisa Allen 40; Edward Best 40; Malcolm Campbell 4,080; Angus Campbell 800; Charles Coleman 40; James East 40; Thomas Glover 5,280; Stephen Hocking 40; Thomas Johnson, jnr 40; James Manning 160; Robert Manning 820; Sarah O'Garey 240; George Padman 80; Edward Rees 40; Edis Sharman 40; Henry Weeks 120; and Harry Winter 40.

Things looked so promising, they purchased crushing machinery. In June 1890, the Campbell brothers decided to leave all mining operations to their manager and returned to their first love - prospecting. In Feb 1891, *Fred Glover* took over as tunnel contractor, but the deeper they dug, the greater their disappointment. After the spending a considerable sum of

money with diminishing results, they were forced to abandon the mine. In 1909, when the first proper road was constructed from Cethana to Lorinna, around the edge of the Forth gully with its 100 hair-pin bends, it passed right through the abandoned site of the old Campbells' Reward Mine.

Up the Five Mile Rise

Between 1888–1891, several gold strikes up the 'Five Mile Rise' brought hundreds of prospectors and miners flocking to the district – the Campbell brothers being among the most successful. The rich surface finds raised hopes that 'the Rise' would become an important source of gold. But those in charge of mining operations consistently had their hopes dashed when, invariably, the gold seam disappeared just a few feet below the surface. Of the many claims up 'the Rise', here are the main ones that were initially mined but closed within a few years.

Golden Hill Mine, 1889: This strike was in a rather pretty gully on the first slopes of the Five Mile Rise, about a mile from the Lorinna bridge. A shaft had been sunk in which gold-bearing pyrite was found. Our Sheffield storekeeper and mail contractor Thomas J Clerke became intensely interested and displayed samples in his shop window. He formed a small company called The Australasian Gold Mining Co in Jan 1891 and spent £2000 employing miners and installing machinery. Sheffield/Railton shareholders included James Butt 2; Edward Best 3; Wm Bound 2; Chas Coleman 2; John Davis 23; James East 5; John Glover 4; John Hutton 3; JG Johnson 171; Thos Johnson 108; Lewis Johnson 139; Thos L Johnson 93 Mary Johnson 100; Edward Knowles 12; Stephen Kelcey 302; Fred Maddox 2; Richard Murfet 2; Geo Morse 3; Henry Overton 1, Geo Padman 9; Ed Rees 28; Geo Sellers 23; James Sellers 15; Ed Strawberry 88; Wm Walker 182, and Thomas J Clerke 257. But like so many other mining companies, they were caught in the Aug 1891 financial crash of the VDL Bank.

Over the next 20 years, others had varying success in trying to reopen the mine.

- Golden Cliff Mine, 1889 discovered by *Joby Thomas* ½ mile SW of the Lorinna bridge.
- Golden Gully, 1890 discovered by *Fred Hedditch*, who worked it with *W Dooley*.
- Thistle Mine/Golden Bar, 1889: discovered by *Alex* and *Malcolm Campbell*, located ¾ mile SW of Lorinna bridge.

Their gold specimens were sufficient to try testing at a greater depth, but gold was only found within four feet of the surface. Below that was far more galena, which became a better proposition to mine. In 1910, *George Day* and *James Crossley* became co-owners of the Thistle mine, producing galena and small amounts of gold. In 1916, George Day gave up farming at Lorinna to concentrate on mining and employed several men working two shifts a day. George retired in 1920 and returned to live in West Kentish.

Union Mine, 1890 discovered by the Campbell brothers in an adjoining valley. It yielded some of the best samples they ever found, but after sinking a shaft 105ft deep, they had little success. In 1917, the mine was worked by *E C James*, and later by *George Sloane* and party.

Glynn Mine, 1896 discovered by *Jimmy Glynn* about three miles up 'the Rise'. During six months in 1898, it produced 36oz of gold, and he attempted to float a Launceston-based company. In 1918, Glynn, a bachelor was found dead from drink and exposure.

The Great Caledonian Mine 1887

At the top of the 'Five Mile Rise', *James Aylett* (18) made the first gold discovery in July 1887, which sparked the Lorinna gold rush. Aylett's party from *Chudleigh & Henry Weeks's* syndicate came together to form the Great Caledonian Gold Mining Co in Feb 1889, with George Rudge (Latrobe) as manager. Sheffield/Railton shareholders included A Hammond 146; F Stevens 196; Henry Weeks 130; Robert Manning 100; G Johnson 75; Ed Anderson 66; John Allen 105; Thos Shepherd 46; Wm Walker 42; John Davies 25; JG Johnson 25; Harry Winter 16; John Manning 7; James East 3; W Moffit 1; and Thomas Johnson 1.

In Jan 1890, wealthy grazier *William Gibson Jnr* of Scone (later Eskleigh), near Perth, visited the mine and was so impressed that he purchased half the company. Because the gold veins were extraordinarily rich near the surface, sufficient investigation work at a deeper level was not carried out. Within a month, they had ordered 30 tons of heavy machinery, including a 25hp stationery steam engine, a 15-head battery and a huge 10-ton boiler for their mine, and employed *George Brown* to clear the mining site.

Mammoth Machinery Haul: In May 1890, this heavy equipment was railed from Launceston to Railton. The only way of getting it to the Great Caledonian mine was to use bullocks to haul it up over Mt Claude (3,393ft), around Oliver's Hill and down across the unbridged Forth River at Lorinna, then up to the top of the incredibly steep 'Five Mile Rise', where some gradients were 1 in 5.

'Gold was only found within four feet of the surface.'

Charles Coleman of Sheffield gained the contract for this mammoth task for £7 per ton. It required 36 bullocks in teams of six bullocks, each pulling several tons for much of the way. But when crossing over Mt Claude and up 'the Rise', each single load required all 36 bullocks pulling together. The Kentish Plains Road overseer, *Walter Butler*, had a team of roadmen precede the bullocks and wagons to clear the track.

It took seven months from the time the wagons left Railton until they reached the Great Caledonian mining site at Middlesex. Leaving Railton on May 12, they passed through Sheffield on May 16, reached the Dasher River May 17, the top of Mt Claude May 28, arrived at the Forth River crossing on Jun 13. Schoolchildren along the route were told to stay home and watch this once-in-a-lifetime event pass their homesteads.

Arriving at the Forth River in the middle of winter, there was a four-month delay waiting for the river to drop and heavy mooring ropes to arrive from Melbourne to enable the loaded wagons to be winched to trees going up 'the Rise'. Unfortunately, the installed machinery had hardly steamed up before the Bank of VDL crashed in Aug 1891, bringing this and most other mining ventures to a standstill.

Although vast amounts of money were spent by many miners and small companies, none of them produced satisfactory financial results. By the late 1890s, the Lorinna–Middlesex gold mining field was almost abandoned, although scores of hopeful prospectors continued to work the district for decades.

CCTV - Alarm Systems - WiFi - Networking



Farms - Construction Sites - Commercial
Business - Residential

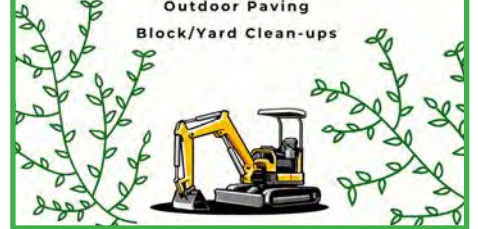


Call: 0499 88 66 03
Email: nic@raptorss.au
Web: www.raptorss.au

ASHWOOD
DIGGING & GARDEN

0418 694 607

- Landscaping & Garden Design
- Fencing Installation & Repairs
- Instant Turf Supply & Installation
- Garden & Lawn Edging
- Gravel Driveways
- Retaining Wall Construction
- Stump & Shrub Removal
- Stump Grinding
- Outdoor Paving
- Block/Yard Clean-ups



We are your local
Kentish electricians.

RESIDENTIAL, COMMERCIAL & INDUSTRIAL



IDD Electrical PTY LTD
Innovative Design, Drafting & Electrical

ECL: 1452424 ABN: 68203257755

Call Todd

iddelectrical.com.au

0422 686 592



TASMANIAN
ORGANIC
COFFEE CO.



Thank you for supporting
the only certified organic
coffee roaster in Tasmania!
Contact Cyriel the bean
carer: 0448 644 696
www.tasorganiccffee.com

Dentist

- Dental Implants from \$3,900
- Crowns and Bridges
- Cosmetic Dentistry
- Night Guards
- Anti-wrinkle Treatment
- Medibank Preferred Provider
- HCF Preferred Provider



Ph 6426 1188

Open Monday to Friday – 9:00am – 5:00pm
98 Gilbert Street, Latrobe

Gerald Davies

Your Local
Property Sales Expert

0418 126 089



Roberts Real Estate
72 Oldaker St., Devonport TAS 7310
T (03) 6424 0900



Roberts
real estate



**SENATOR
WENDY ASKEW**
LIBERAL SENATOR FOR TASMANIA

46 Cameron Street,
Launceston TAS 7250

63318501

senator.askew@aph.gov.au

SenatorAskew



Authorised by Senator W. Askew, Liberal Party of Australia,
46 Cameron Street, Launceston TAS 7250.

Learn flower arranging

A flower arranging workshop will be held at the Uniting Church in Sheffield on Monday,

November 24, from 1-3pm, hosted by Kentish Garden Club's Kate Jackson. This free event is open to the public but numbers are limited (priority will be given to U3A members) so please reserve your place by email: kentishu3a@gmail.com

Kate says: "A beautiful bunch of flowers makes a lovely gift or a colourful decoration for your home.

Whether you buy a bunch of roadside flowers or have plenty to choose from in your garden, we'll be having a go at making a stylish posy/bouquet and then a low arrangement for the table. We will identify 'feature', 'fill' and 'foliage' to use in our

arrangements.

Please bring your own flowers and I will bring a variety of foliage. You'll also need sharp secateurs or suitable scissors and remember a container to take home your beautiful bouquet!

You are welcome to come along, make a coffee and watch or, if you would like to have a go at making your own after my demonstration, I am happy to help."



As you can see, the Kentish U3A 'French for Fun' group is hard at work!

Venez parler Français

If you have always wanted to learn French, plan on going for a trip to France, or learnt it many years ago, then French for Fun is for you!

Meeting at 11am on Tuesdays in the Sheffield Uniting Church kitchen, we have an enjoyable session brushing up our spoken and written skills, followed by a French lunch.

Language teacher (and flower arranger) Kate Jackson has joined the group and is enjoying helping with grammar and pronunciation.

We would welcome any native French speakers who would like to pop in for a chat to help with conversation skills.

Contact Leoni 0429 705 062.

U3A - the University of the Third Age - is a global movement for retired or semi-retired people wanting more out of life.

MR
PERFECT
MORE THAN A BBQ
Come along to the Mr. Perfect Kentish BBQ
Saturday 29th November
11 am - 12:30 pm
Health Park Sheffield *

FREE BBQs FOR MEN
Community & Connection | Park BBQs across Australia | More than a BBQ

In case of bad weather, please join us at the Bossimis Bakehouse & Cafe for a hot drink and a chat

BBQs are held on the last Saturday of each month
Contact Kentish House for info 0447 325 343
This is a COVID Safe Event. Please do not attend if you are feeling unwell or experiencing cold/flu-like symptoms.

COURSE TIMES & CONTACTS

Move with Ease - Mon 10am;

Petanque - Mon 11.15am

Nita 0437 795 374

Mahjong - Mon 1pm

Ali 0410 742 012

Pickleball - Tue 9am

Kate 0407 510 857

French - Tue 11am

Leonie 0429 705 062

Table Tennis - Tue 3pm

Don 0458 343 059

Guitar - Tue 2pm; Ukelele - Thu 10am; Cribbage - Fri 2pm

Mark 0428 515 445

Cycling/Walking:

Margaret 0421 648 123

Nature walk:

Greg 0438 589 173

Balance & Bones - Wed 9 & 10am; Fri 9am

Jennifer 0400 376 937

Crosswords - Wed 1pm

Margaret 6491 1175

Challenging walk:

Lindsay 0434 984 570

Joy of Maths - Fri 10am

John 0457 262 040

Line Dancing - Fri 1.30

Dianne 0413 881171

Zumba - Thu 2pm

Drawing - Sat 1pm

Colette 0439 426 665

November Crozzle

All words go in a straight line but in any direction – Up, Down, Left, Right, Diagonal. Most words are joined to another word by at least one letter, so any letter may be used in more than one word. Circle the words in the graph as you find them and when all the words are circled, there will be letters left over. Write these in the spaces below to discover the Theme Word.

Ada	M	A	C	K	E	N	Z	I	E	L	L	E	R	O	S
Arthurs	L	E	K	A	E	L	N	C	H	A	P	T	E	R	E
Augusta	L	V	I	R	N	N	O	S	I	H	C	R	U	M	V
Ayr	O	O	N	O	O	T	D	M	A	A	R	H	N	A	I
Barrington	S	D	G	S	R	E	R	E	T	E	T	A	I	N	L
Burbury	M	O	W	E	E	S	O	A	D	R	L	S	V	A	O
Catagunya	I	R	I	B	B	L	G	D	A	L	C	A	E	H	U
Cethana	L	A	L	E	O	U	E	O	A	A	R	N	S	T	I
Chapter	P	N	L	R	N	P	R	W	L	V	A	O	N	E	S
Crater	I	A	I	Y	I	E	O	B	A	O	T	O	O	C	A
Crescent	L	G	A	E	N	R	K	A	U	N	E	L	S	H	T
Dobson	L	N	M	N	O	T	G	N	I	R	R	A	B	O	S
Dora	A	A	D	A	T	M	I	K	A	N	Y	P	O	E	U
Dove	N	R	R	Y	S	T	C	L	A	I	R	M	D	S	G
Echo	S	A	G	R	E	A	T	N	E	C	S	E	R	C	U
Gordon	K	P	N	A	M	S	T	N	U	H	E	L	E	N	A
Great															
Helen															

Huntsman
Kara
KingWilliam
Leake
Louisa
Mackenzie
Mackintosh
Meadowbank
Meston
Mikany
Murchison
Nive
Oberon

Olive
Oval
Paloona
Parangana
Pedder
Pieman
Pillans
Plimsoll
Repulse
Rosebery
Rowallan
Sorell
StClair

Tooms

CRYPTIC PUZZLE TASMANIA

1. Sporting cane hat (7)
2. A beret perhaps! (10,3)
3. Was he a Zen secretly? (6)
4. Abbeys' leaders act inappropriately (9)
5. Hula! Be blowed (6)
6. Almanac's amended (9)
7. Trash an error (7)
8. Re-parse gerund bit (9)
9. Obtuse angle A (6)
10. Sir! Derive formula! (9))

Answers P47

FOR SALE

WHEAT 20KG BAGS \$14 0417
141399 or
0400 263 340

MICK DAVIES DOMESTIC WATER SUPPLIES

The Davies family have been providing this service to the Kentish area for over forty years.
Call 0417 581 593 or 6491 1911 for prompt reliable delivery. Anywhere anytime.

HARDWOOD KINDLING

\$8 per bag approx.5 KG Local Delivery
Phone 0409 218 364

FIREWOOD DELIVERED

\$450 per Ute load
Sheffield and Surrounds
Leigh 0429 926 723

WANTED TO BUY

I have buyers actively looking for quality residential homes in Sheffield & Railton with veggie gardens or outdoor entertaining areas and sunny spaces.

Let's chat, no obligation.
Call Corinne on 0488 611 968
Roberts Nicholson Real Estate



ANTIQUES, COLLECTABLES, ANYTHING OLD & INTERESTING

Father and Son paying cash for antiques, collectables, anything old and interesting. Shed and House cleanouts.
Please call Stephen and Simeon
0448 069 030

GIVE AWAY

HANDSOME WHITE RAM 5YRS?
Good Lambs Lots of twins!
Dawson's Siding
Phone 0409 546 376 6-6.30pm



CLASSIFIEDS

WORK WANTED

DISCOUNT DOMESTIC WATER

Septic Tank Cleaning
Portable Toilet Hire * Skip Bin Hire *
Agricultural Contracting * Slashing & Bailing * Cultivation & Planting *
Rock Picking & Raking Firewood
0419 539 537 or 6491 1227

8 TON EXCAVATOR/TIP TRUCK 11,000L WATERCART

Specialising in
- Driveways & Cow Lanes
- House Excavations - Irrigation Mains -
Post Driving & Fencing - Gravel Supplies
Call Tony on 0418 911 691

PICTURE FRAMING

It's time to frame it! Artworks, posters, photos, jigsaws & more.
Call Greg today to discuss all your framing needs.
Ph 0414 457 816.

JOHN'S SPOUTING CLEANING

We offer professional service from Deloraine to Smithton, Treat lichen on roofs, Pressure wash all buildings, all concrete surfaces, unblock downpipes & lots more. Fully insured
Call John today for no obligation free quote. 0432 653 709

ENABLED TECH

"For all your IT problems"
Call Josh 0408 387 541

QUALIFIED EXPERIENCED HORTICULTURIST

available for gardening in the Kentish Shire.
Services include:
weeding, pruning, planting.
Phone: Michael on 0458 023 525 or
email:michael.copas@bigpond.com

WANTED KNOWN

CANINE HEALTH & REHABILITATION

In-home Myofunctional and Rehabilitation services for your dog. Specialising in:
*Helping your ageing dog stay active & happy. *Helping your dog recover from orthopaedic or spinal surgery. *Helping dogs with muscle injuries.
www.caninehealthandrehabilitation
info@caninehealthandrehabilitation.com

PUPPY & DOG TRAINING

1-on-1 in home lessons or group classes available.
Ph: Emma 0408 520 654
www.notonlydogs.com

SMALL ENGINE REPAIRS

The Sheffield Shed has someone to look after small engine repairs for the community.
Call 6491 1933

CARPET CLEANING

RESTORE your carpets to their best this SPRING
2 rooms & hallway \$160
3 rooms, hallway & lounge \$199
"mention this ad with your booking and receive 10% off the price"
Phone Kathy on 0439 925 191

RAILTON RSL BAR STAFF

Railton RSL Sub-Branch is looking for a permanent part-time bar attendant. RSA and WWVP card required.
Award wages.

Thu, Fri, Sat from 4pm till close, times will vary, also may be needed other days for events or functions.
Minimum 15 hours per week.
Resumes to be emailed to:
railton.rslsub@gmail.com

Railton Bowls Club thanks Cement Australia

Noel Purton (*left*) from the Railton Bowls Club presented Cement Australia's Operations Manager Simon Tueon with a plaque of appreciation at the Community Consultation Committee meeting at Goliath last month.

The meeting is an opportunity for organisations to discuss plant and mine operations, community needs and issues.



POLICE REPORT

Police have seized firearms, gun parts, ammunition and gel blasters during a series of searches across Tasmania involving members of Australian Border Force.

The operation formed part of a targeted crackdown on illicit firearms, including privately manufactured weapons, which resulted nationally in more than 1000 firearms and parts being seized and 184 arrests.

Multiple searches were conducted in Tasmania, with properties at Glenorchy, Sorell and Burnie targeted.

Four people were arrested across the week-long operation and items seized included firearms, firearms parts and ammunition.

Tasmania Police Joint Organised Crime Task Force Acting Inspector Leah Adams said police conducted searches on five days at various locations.

“Four of those days were in conjunction with ABF, where in a number of the searches conducted we were looking for illicit firearm parts, and manufactured firearms” Acting Inspector Adams said.

“There were five firearms seized, numerous imitation

Emergency 000

Sheffield Station 6478 6012

firearms such as Glock-style gel blasters, and parts for manufacturing firearms. Also located were numerous quantities of cocaine with one northern offender to be charged with trafficking.”

Acting Inspector Adams said it was concerning to see a number of gel blasters being held illegally. Gel blasters are considered firearms in Tasmania, under the Firearms Act 1996. To lawfully possess a gel blaster, you must hold a Category A licence (air rifle) or Category H licence (air pistol).

A person needs a genuine reason to possess a gel blaster, in the same way that they need a genuine reason to possess any other firearm.

Australian Border Force Commander Graeme Campbell said the importation of firearms and firearm parts was of concern to law enforcement across the country, as the dangers of these weapons falling into the wrong hands “is extremely concerning”.

To report illegal firearms, or the use of firearms to commit a crime, contact police on 131 444 or Crime Stoppers on 1800 333 000.

Non urgent 131 444

Latrobe Station 6478 4099

Lower Barrington Baptist Church

Sheffield Road, Lower Barrington
All warmly welcomed - Sundays 10am
1st Sunday - Holy Communion
Kid's church in school term
Mens & Ladies Bible studies + KYB
Enquiries: Steve - 0409 944 296.



Sheffield Baptist Church

“Caring and Making a Difference in Our Community”

104-106 Main Street, Sheffield
Service Time 10:30am each Sunday
All welcome – friendly atmosphere
Fellowship Tea every third Sunday
5:30pm - 7:30pm Favourite hymn singing, good food and fellowship
Phone Paul - 0428 323 788

Send classified ads to

advertising@thekentishvoice.com.au
or deliver to 12 Victoria St Sheffield

CHURCH NOTICES

Holy Cross Catholic Church

High Street Sheffield
Mass is celebrated Sundays at 11.30am.
All Welcome.
Parish Office Ph 6424 2783



Sheffield Uniting Church

Home of Library Aid Int'l, Kentish U3A and Mountain Echoes Choir



Corner of Main/Henry streets
A church serves its community in many ways. At present, we do not hold Sunday Worship. Instead, we invite you to join in a time of quiet reflection and prayer at an Ecumenical Service 8.30am Mondays. We also offer a place for friends to meet, laugh and relax. Phone Leoni Read 0429 705 062.

Traditional Anglican Church

For service information,
please ring 6425 5605

St John's Kentish Anglican Community Church

92 Foster Street Railton
Every Sunday at 10am.
Holy Communion 2nd & 4th Sunday
Prayer Group Monday 10am
'Ekklesia' Food Outreach Program
Thursday 10am King's Hall Railton
Contact: John Gray - Honorary Priest -
0417 524 979; 47johngray@gmail.com

Roland Gospel Hall

152 Staverton Rd, Roland
Serving the Christian Brethren community in the Kentish district.
Sunday Worship 10am - 11am
Fellowship (Family Service) 11am-noon



Sheffield Bible Chapel

45 High Street Sheffield
“A caring church for the whole family”
The Sheffield Bible Chapel conducts weekly services beginning 10am.
Enquiries please phone 6491 1447
Youth Group Enquiries, phone Joy Tekinay on 0428 666 494.

WHAT'S ON IN NOVEMBER

		Famous Artists Reimagined Sheffield Art Gallery
Sat-Sun	Nov1-2	Steam Engine rides 11am-4pm, Sheffield Steam & Heritage Centre
Sun-Sat	Nov2-8	International Mural Fest Mural Park, Sheffield
Tuesday	Nov 4	Melbourne Cup lunch 11.30am, Sheffield Bowls Club
Sat-Sun	Nov8-9	Medieval Festival 10am, Redwater Creek, 14 Spring Street, Sheffield
Saturday	Nov 8	Railton Market 9am-1pm, King's Hall, 10 Latrobe Road, Railton
		Mural Fest awards presentation 2pm, Mural Park, Sheffield
Tuesday	Nov 11	Remembrance Day
		Kentish Probus Club 10am, Sheffield Bowls Club
Wednesday	Nov 12	Services Australia 9.30-11am Sheffield; 12-12.3pm Railton
		Kentish Carers Support Group 2-3pm, Rural Health, 1B Henry St
Thursday	Nov 13	Aged Care & Beyond Expo 11am-2pm, Sheffield Town Hall
		Kentish Garden Club 7.30pm, Sheffield Bible Chapel, 45 High St
Fri-Sun	Nov14-16	Mt Roland Folk Festival Sheffield Town Hall, Uniting Church
Friday	Nov 14	Household Chemicals Disposal 1-4pm, Sheffield Waste Transfer Station
		Aaron Catlin 7-10pm, Railton RSL, 52 Foster Street
Saturday	Nov 15	Tasmazia Family Fun Day , 500 Staverston Road, Promised Land
		Wilmot Museum 20th anniversary 11am, 67 Main Street (see p9)
		MG Car Club Concours 10am, Health Park, Sheffield
Monday	Nov 17	Trivia 6.30 for 7pm, Sheffield RSL, 77 Main Street, Sheffield
Tuesday	Nov 18	Kentish Council meeting 6pm, Council Office, High Street, Sheffield
Saturday	Nov 22	Film screening: Bravery & Betrayal 7.30pm, Railton RSL (see p34)
Tuesday	Nov 25	Paws & Grub 11am-noon, Claude Road Hall
Thursday	Nov 27	Open Day Railton Neighbourhood Centre 10am-1pm, 8 Foster Street
		Paws & Grub 9.30-10.30am, Lower Barrington Hall
Saturday	Nov 29	Lower Barrington community market 9am-1.30pm, 1027 Sheffield Rd
		Mr Perfect BBQ 11am-12.30pm, Health Park, Sheffield
Sat-Sun	Nov29-30	GardenFest - various private gardens (see p8)

Cryptic Puzzle Answers

- | | |
|-------------------|---------------|
| 1. Cethana | 6. Salamanca |
| 2. Frenchmans Cap | 7. Strahan |
| 3. Zeehan | 8. Tunbridge |
| 4. Abbotsham | 9. Legana |
| 5. Beulah | 10. Riverside |

**Businesses that Advertise
Get Business!**

Phone Lesley Begg on 0429 451 107.

**Crozzle Solution:
TAS LAKES**



SHEFFIELD MECHANICAL & TYRE

Give the
team a call
today!

1/36 CLAUDE ROAD
PH: 6491 1107

I can't believe we're halfway
through the year already!

It's November.



Whaaaaaaat!?

LOCAL WATER EXPERTS PROVIDING TRUSTED SOLUTIONS

Your one-stop-shop for complete
systems, in-house design, install
and maintenance



We have everything for all
your water & irrigation needs

- Pivots
- Solar Pumps
- Domestic Pumps
- Pipe Fittings
- Poly Pipe
- Filtration
- Pump Service & Maintenance



LATROBE STORE
4 Speedway Drive
03 6423 1255



DARLING irrigation
making every drop count
An AEMET Business



www.darlingirrigation.com.au



1800 729 827

ruralaliveandwell.com.au/callbackrequest

Rural life throws up many challenges and we recognise that navigating those ongoing challenges can become tiresome.

Our team are passionate about building thriving and sustainable communities. To achieve that, we first have to make sure our people are healthy.

It's not easy to reach out for support, but we have tried to made it simple. Call directly or submit a call back request

